



## The Brighton on Bay

Off Market

\$ 710,000

🛏 1.5 🚗 1 🚗 1

50 | 1 Asling Street - Brighton - VIC

🏠 66 m<sup>2</sup> Floor Area

### Stylish One-Bedroom Plus Study Apartment in The Brighton on Bay – Stylish Living with Dual Balconies!

Discover the exceptional lifestyle offered by this spacious and light-filled one bedroom plus study apartment, perfectly positioned in the heart of Brighton. With its south-west orientation, this remarkable home is designed to impress. Step inside and be greeted by a modern kitchen that features a sleek stone benchtop, stainless steel appliances, and a convenient dishwasher, making cooking a delight. The home includes a beautifully fitted out study, which can also serve as a formal dining space, providing versatility and functionality. The well-appointed bathroom includes an electric towel heater, adding a touch of luxury to your daily routine.

#### Amenities

- 🛍 Close to Shops
- 🚗 Close to Transport
- 🧺 Dishwasher
- 📉 Ducted cooling
- 📈 Ducted heating
- 📞 Emergency Call System

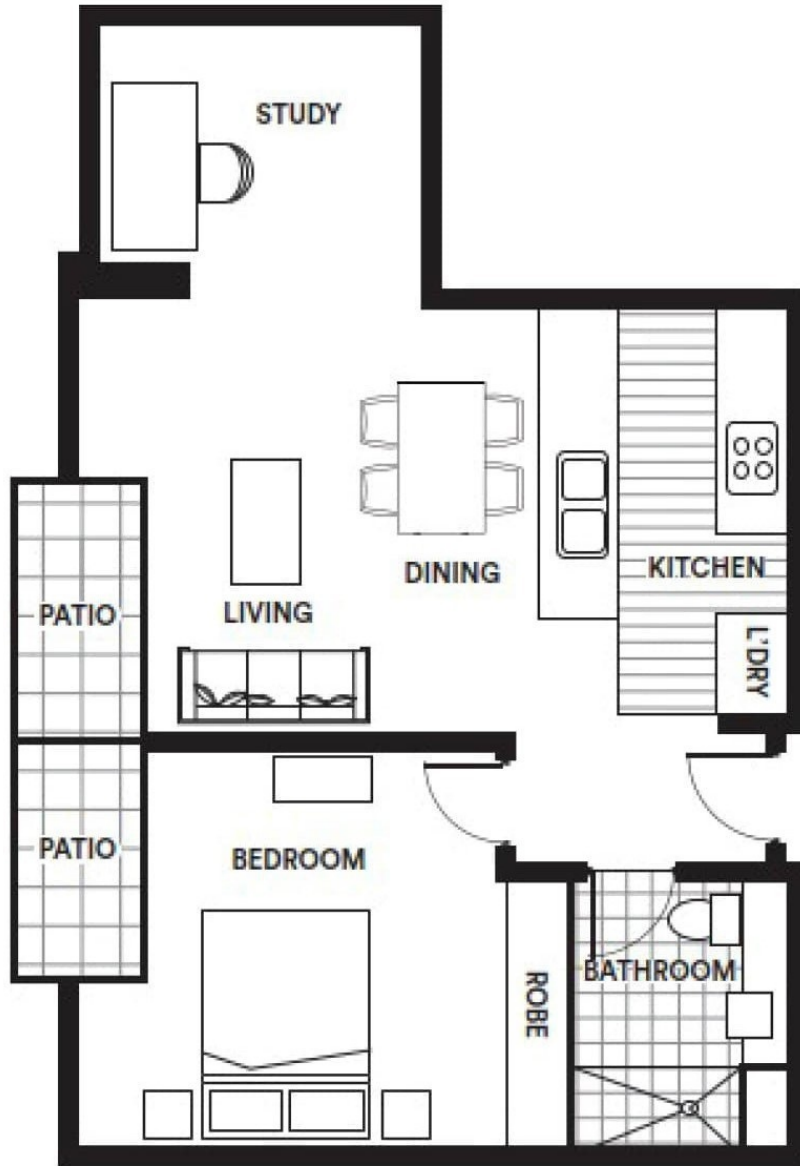


1800 550 550  
keyton.com.au

\*Photographs are for illustrative purposes. Some images may depict items not provided by Keyton within the units such as furniture and other decorative items.

50 | 1 Asling Street - Brighton - VIC

🏠 1.5 🛏 1 🚿 1



Internal	61.87 m <sup>2</sup>
Balcony	4.68 m <sup>2</sup>
<b>Total Area</b>	<b>66.55 m<sup>2</sup></b>

This is an indicative floor plan that may vary according to home location within the village/resort. The information, dimensions and specifications on this floor plan are believed to be correct but is not guaranteed and may change without notice. Any illustrations are an artist's impression only and subject to change. Keyton gives no warranty concerning the accuracy of the material or information displayed in this brochure and all such warranties (whether implied or otherwise) are excluded to the extent permitted by law. Prospective purchasers should make their own enquiries.