



Waterford Valley Lakes

Off Market

\$ 740,000

🏠 2 🛏 1 🚗 1

11 | 175 Kelletts Road - Rowville - VIC

📏 125 m² Floor Area

A lovely unit located in a quiet position in the village

This spacious two-bedroom unit has undergone a lovely refurbishment and is highlighted by new paint and quality floor coverings throughout. The kitchen is equipped with modern appliances, and the home features built-in robes in both bedrooms and a well-appointed main bathroom. The home boasts a generous open plan living and dining area, internal laundry, generous storage, split system air conditioning to keep you comfortable all year round, and direct access to a private courtyard with a lovely private garden – providing the most perfect space to relax or entertain.

Amenities

- 🚤 Caravan/Boat storage
- 🌳 Close to parks
- 🛍 Close to Shops
- 🚗 Close to Transport
- 🏠 Covered patio
- 📏 Ducted cooling



1800 550 550
keyton.com.au




*Photographs are for illustrative purposes. Some images may depict items not provided by Keyton within the units such as furniture and other decorative items.

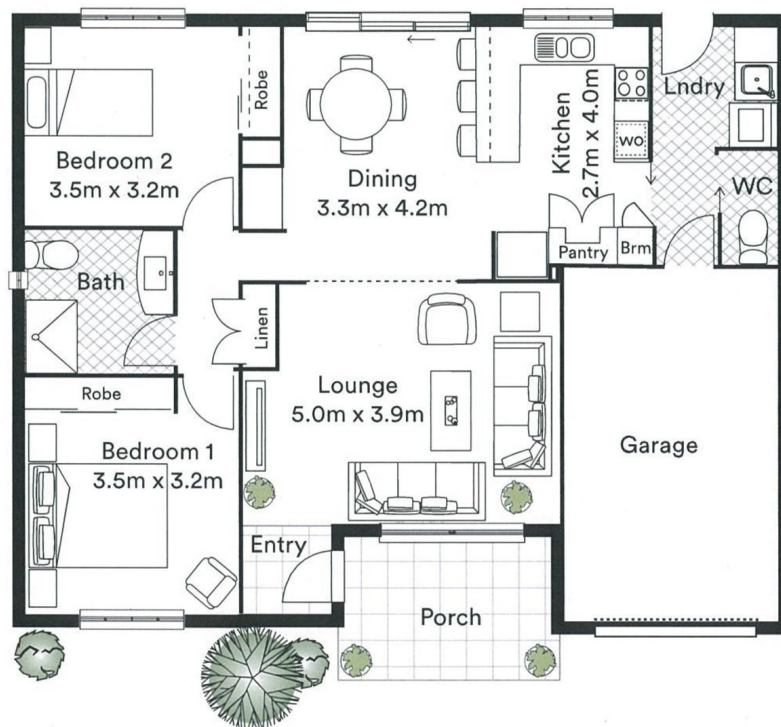
11 | 175 Kelletts Road - Rowville - VIC

 2  1  1

WATERFORD VALLEY LAKES

MONBULK

 2  1.5  1



Area	Metric m ²	Squares	Square ft ²
Total	125.01	13.46	1345.60

This is an indicative floor plan that may vary according to home location within the village/resort. The information, dimensions and specifications on this floor plan are believed to be correct but is not guaranteed and may change without notice. Any illustrations are an artist's impression only and subject to change. Keyton gives no warranty concerning the accuracy of the material or information displayed in this brochure and all such warranties (whether implied or otherwise) are excluded to the extent permitted by law. Prospective purchasers should make their own enquiries.

1800 550 550
keyton.com.au