



Heathglen

Off Market

\$ 360,000

🏠 2 🛏 1 🚿 1

61 | 2 Glendale Court - Werribee - VIC

📏 82 m² Floor Area

A fully renovated unit in a prime village location

Get your hands on this rare find! A fully renovated unit located in the heart of the village. This modern unit has been freshly renovated to a very high standard. With an open plan living design, this beautiful unit features a brand new kitchen with a stone benchtop and modern appliances.

Amenities

- 🗄 Built In Wardrobes
- 🚤 Caravan/Boat storage
- 🌳 Close to Parklands
- 🛍 Close to Shops
- 🚊 Close to Transport
- ♿ Disability Access

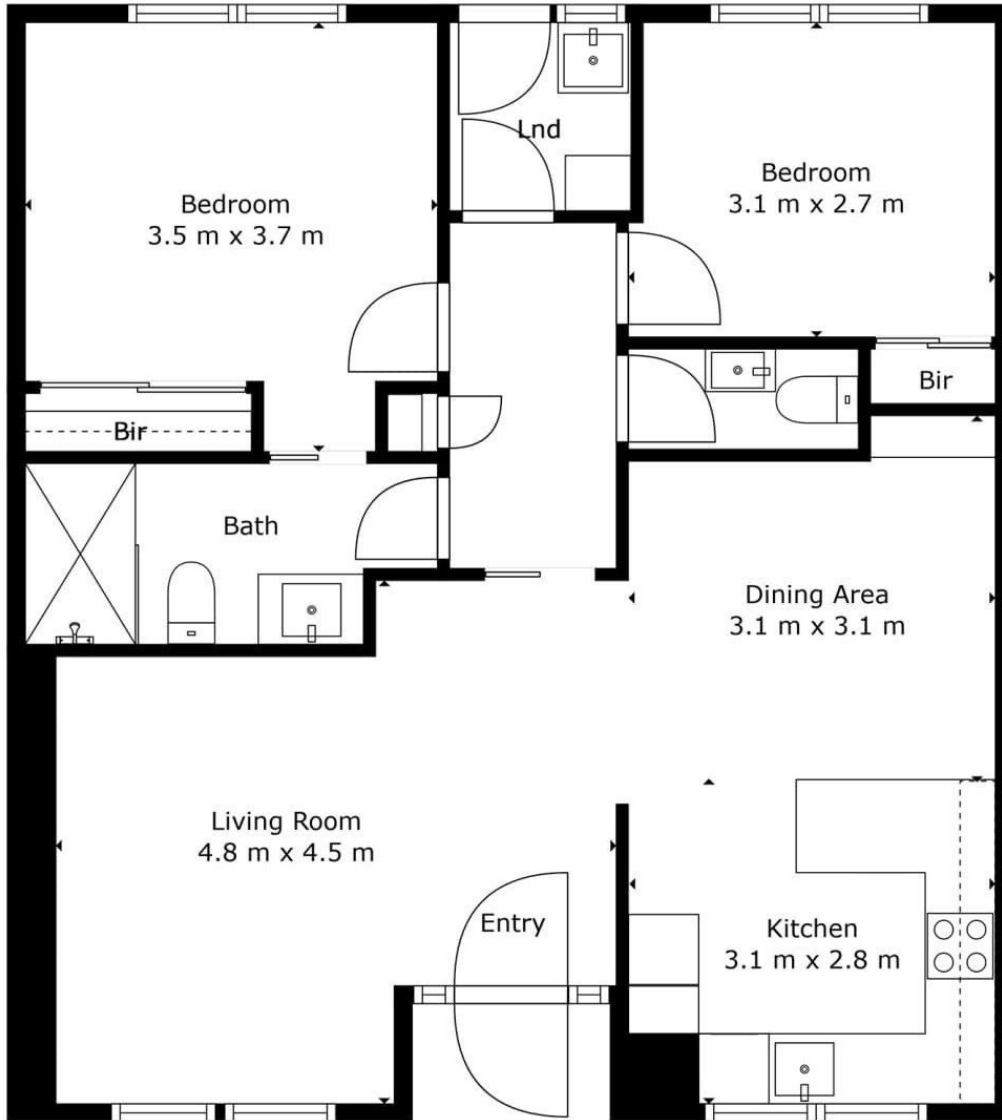


1800 550 550
keyton.com.au

*Photographs are for illustrative purposes. Some images may depict items not provided by Keyton within the units such as furniture and other decorative items.

61 | 2 Glendale Court - Werribee - VIC

🏠 2 🛏 1 🚿 1



Total Area 82 m²

This is an indicative floor plan that may vary according to home location within the village/resort. The information, dimensions and specifications on this floor plan are believed to be correct but is not guaranteed and may change without notice. Any illustrations are an artist's impression only and subject to change. Keyton gives no warranty concerning the accuracy of the material or information displayed in this brochure and all such warranties (whether implied or otherwise) are excluded to the extent permitted by law. Prospective purchasers should make their own enquiries.

1800 550 550
keyton.com.au