






Windsor Park

Off Market

\$ 340,000

 2  1  1

25 | 120-130 townsend Road - St Albans Park - VIC

 86 m² Floor Area

A charming unit with refreshed interiors and an undercover patio area

Claiming a superb position in one of Windsor Park's most popular locations, this refurbished northeast-facing two-bedroom unit offers easy care low maintenance living with its sparkling new interior décor and new quality floor coverings throughout. The home offers a light and bright open-plan layout with an easy flow to the private covered patio area and gorgeous private garden. Additional features will include a modern kitchen with stone benchtops and quality appliances, a well-appointed bathroom, a separate toilet, two bedrooms with built-in robes and a single lock-up garage.



1800 550 550
keyton.com.au

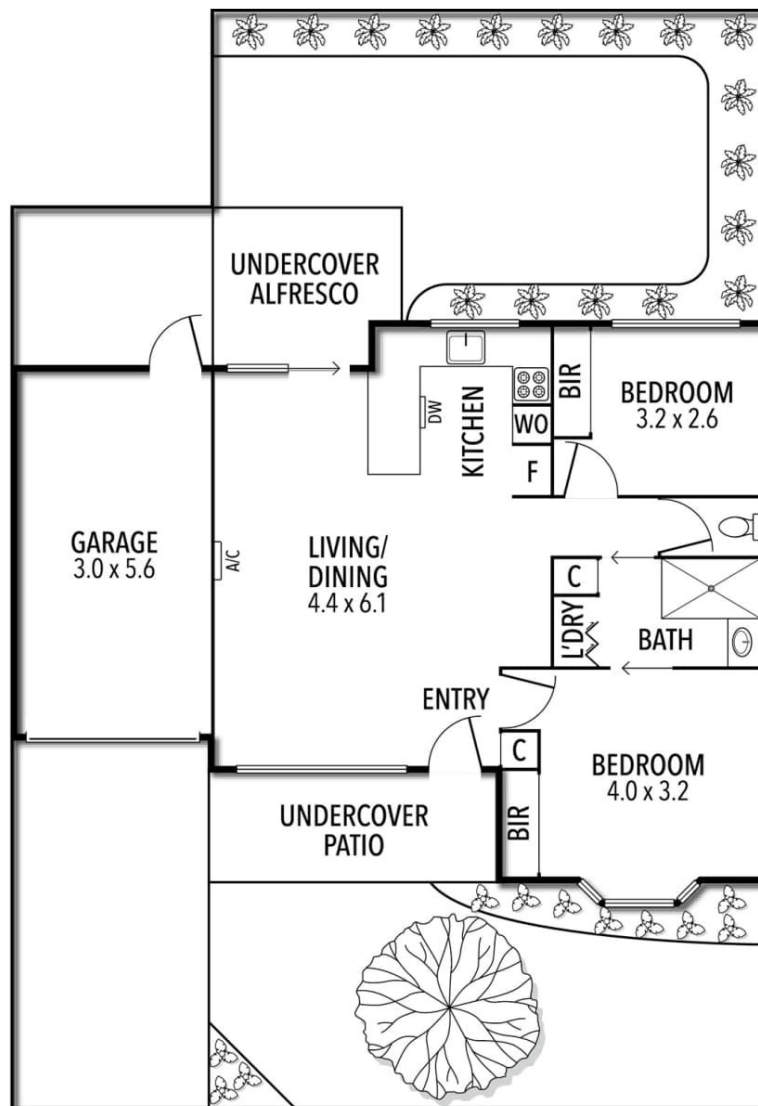
*Photographs are for illustrative purposes. Some images may depict items not provided by Keyton within the units such as furniture and other decorative items.

25 | 120-130 townsend Road - St Albans Park - VIC

 2  1  1

Unit 25

 2  0  1  1



Total Area **86 m²**

This is an indicative floor plan that may vary according to home location within the village/resort. The information, dimensions and specifications on this floor plan are believed to be correct but is not guaranteed and may change without notice. Any illustrations are an artist's impression only and subject to change. Keyton gives no warranty concerning the accuracy of the material or information displayed in this brochure and all such warranties (whether implied or otherwise) are excluded to the extent permitted by law. Prospective purchasers should make their own enquiries.

1800 550 550
keyton.com.au