




Vermont Estate

Off Market

Expressions of interest

 2.5  1  1







52 | 7a Wheaton Street - South Plympton - SA

 114 m² Floor Area

Upgraded Two-Bedroom plus Study Unit - Independent Living with Style

Experience the best of independent living with this fully upgraded two-bedroom plus study unit, boasting a sought-after street frontage and a large north-facing front garden and driveway. From the moment you step inside, you'll be captivated by the abundance of space and the modern upgrades that enhance this home. Enjoy the sunshine and the tranquil views of the established front garden and lawns from the bedrooms and living room, creating a serene and peaceful ambience. The master bedroom features a spacious four-door built-in robe and an attached ensuite toilet, while the second bedroom also offers a convenient built-in robe.

Amenities

-  Caravan/Boat storage
-  Close to parks
-  Close to Shops
-  Close to Transport
-  Dishwasher
-  Emergency call system



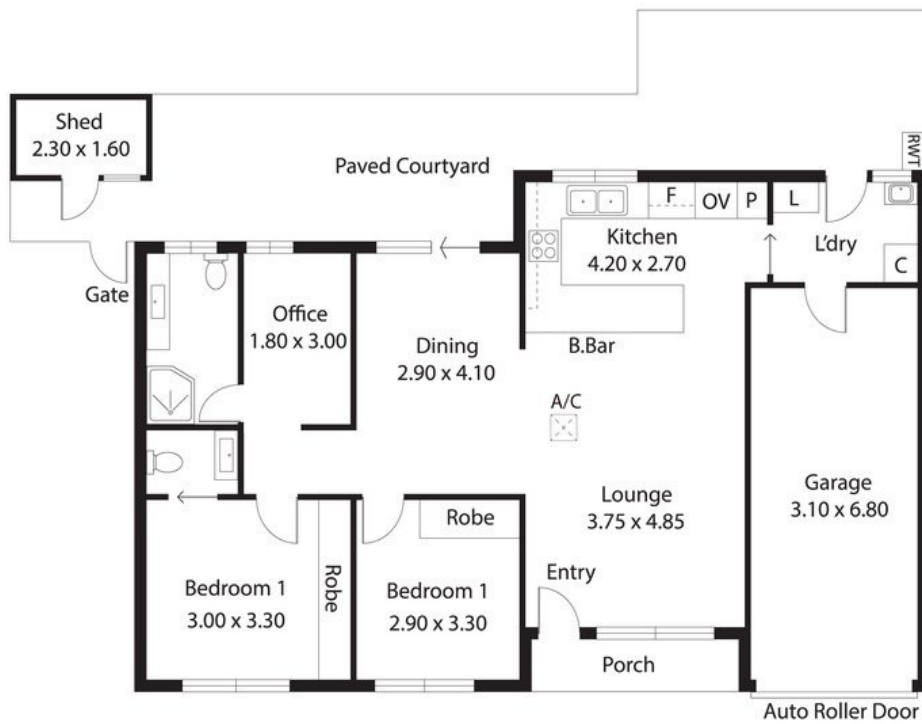
1800 550 550
[keyton.com.au](https://www.keyton.com.au)

*Photographs are for illustrative purposes. Some images may depict items not provided by Keyton within the units such as furniture and other decorative items.

52 | 7a Wheaton Street - South Plympton - SA

 2.5  1  1

Villa 52,
Vermont Estate



Living: 86.40SQ.M
 Porch/Courtyard: 43.52SQ.M
 Garage: 21.08SQ.M
 Shed: 3.68SQ.M

TOTAL: 154.68SQ.M

Produced by 

This Drawing is for illustration purposes only. All measurements are internal and approximate. Details intended to be relied upon should be independently verified.