




Waterford Park

Off Market

Expressions Of Interest Open







 3  1.5  2

82 | 10 Waterford Park Avenue - Knoxfield - VIC

 160 m² Floor Area

Enjoy the Retirement you deserve!

Amenities

-  Built-in Wardrobe
-  Close to parks
-  Dishwasher
-  Double Lock Up Garage With Internal Access
-  Ducted heating
-  Emergency Call System



1800 550 550
keyton.com.au

*Photographs are for illustrative purposes. Some images may depict items not provided by Keyton within the units such as furniture and other decorative items.

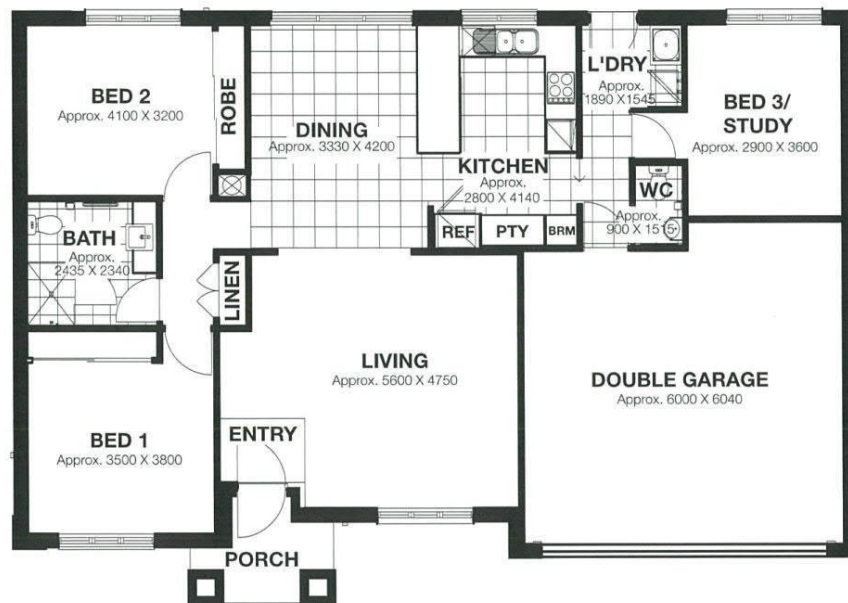
82 | 10 Waterford Park Avenue - Knoxfield - VIC

 3  1.5  2



St Andrews

3 Bedroom + Double Garage



	Metric	Imperial
Area:	117m ²	1,259.5 sq.ft.
Garage Area:	38.9m ²	418.6 sq.ft.
Porch:	4.3m ²	46 sq.ft.
Villa Total:	160.2m²	1,724.1 sq.ft.

* 17.25 SQUARES

The information on this floorplan is believed to be correct but is not guaranteed. Dimensions and specifications are subject to change without notice. Prospective Purchases must rely on their own enquiries. Published by Lend Lease Primelife Realty Vic Pty Ltd, October 2011. ^Back porch (alfresco living) in 'golf facing units' only.

LLP/0226

This is an indicative floor plan that may vary according to home location within the village/resort. The information, dimensions and specifications on this floor plan are believed to be correct but is not guaranteed and may change without notice. Any illustrations are an artist's impression only and subject to change. Keyton gives no warranty concerning the accuracy of the material or information displayed in this brochure and all such warranties (whether implied or otherwise) are excluded to the extent permitted by law. Prospective purchasers should make their own enquiries.

1800 550 550
keyton.com.au