



## Waterford Valley Lakes

Off Market

\$ 740,000

🏠 2 🚗 1 🚗 1

22 | 175 Kelletts Road - Rowville - VIC

📏 125 m<sup>2</sup> Floor Area

Beautifully presented unit, perfectly placed within the village and now ready to welcome its new owners.

This lovely two-bedroom unit is perfectly placed in a quiet location within the village. Highlighted by new paint and floor coverings, this home provides a great opportunity to enjoy a truly low-maintenance lifestyle. Featuring two bedrooms with built-in robes, a well-appointed main bathroom, a separate toilet, and internal laundry. The split system air conditioning will keep you comfortable all year round and if you enjoy the outdoors there is a lovely, covered patio area and private garden – great for entertaining family and friends.



1800 550 550  
keyton.com.au

\*Photographs are for illustrative purposes. Some images may depict items not provided by Keyton within the units such as furniture and other decorative items.

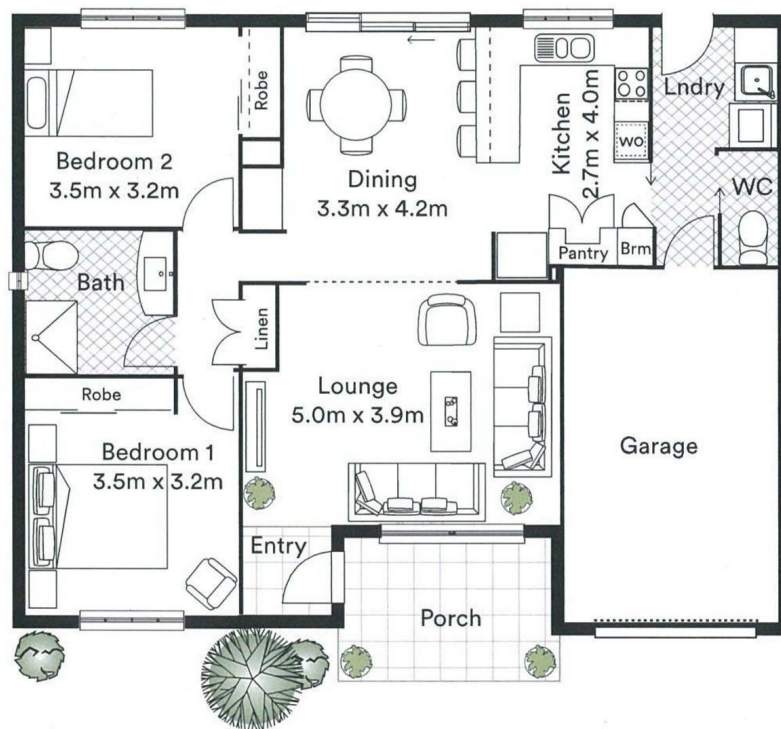
22 | 175 Kelletts Road - Rowville - VIC

2 1 1

WATERFORD VALLEY LAKES

## MONBULK

2 1.5 1



Area	Metric m <sup>2</sup>	Squares	Square ft <sup>2</sup>
Total	125.01	13.46	1345.60

This is an indicative floor plan that may vary according to home location within the village/resort. The information, dimensions and specifications on this floor plan are believed to be correct but is not guaranteed and may change without notice. Any illustrations are an artist's impression only and subject to change. Keyton gives no warranty concerning the accuracy of the material or information displayed in this brochure and all such warranties (whether implied or otherwise) are excluded to the extent permitted by law. Prospective purchasers should make their own enquiries.

1800 550 550  
keyton.com.au