



Henry Kendall Gardens

Off Market

\$ 680,000

 2  1  1







727 | 150 Maidens Brush Rd - Wyoming - NSW

 146 m² Floor Area

Oasis with Native Garden Views, Modern Kitchen and Covered Patio

Step into a world of convenience and comfort in this excellent two-bedroom villa, located in the heart of Henry Kendall Gardens. Each bedroom is equipped with generous built-in wardrobes. The heart of the home is the modern kitchen, a modern design with its elegant stone benchtops and quality appliances. The open-plan living area, bathed in natural light, leads seamlessly to a charming covered patio – a perfect spot to savour the lush, native garden surroundings. This home is an ideal retreat for those with a green thumb and a love for the outdoors. Added comforts include reverse cycle air conditioning for year-round comfort, internal access to a single garage, and a convenient second toilet. Embrace a lifestyle of ease and natural elegance in this delightful villa.

Amenities

-  Air Conditioning
-  Close to parks
-  Close to Shops
-  Close to Transport
-  Courtyard
-  Dishwasher

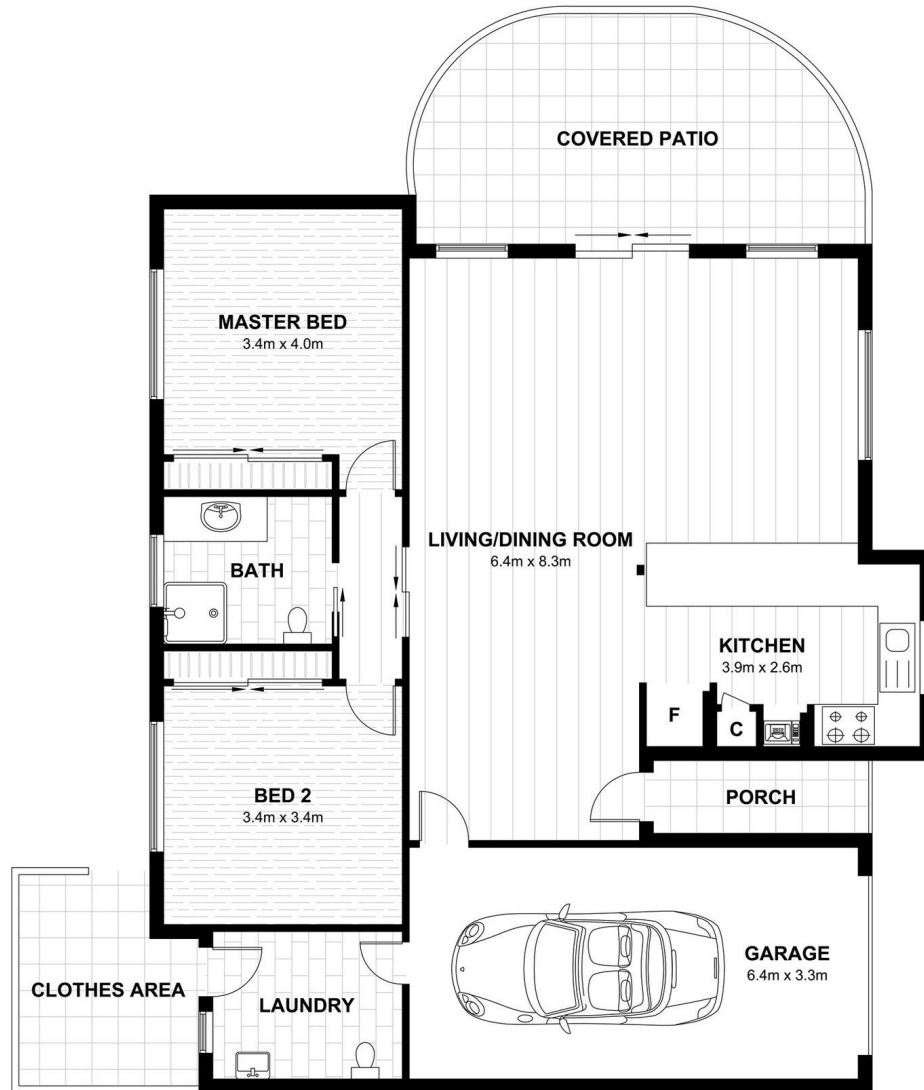


1800 550 550
[keyton.com.au](https://www.keyton.com.au)

*Photographs are for illustrative purposes. Some images may depict items not provided by Keyton within the units such as furniture and other decorative items. **If the contract option chosen by you requires to do so, you will have to pay a departure fee when you leave this village and/or you will have to pay a departure fee when you leave this village, which will impact on the capital gains received when leaving the village, and/or you will have to share any capital gains received with the operator of this village.

727 | 150 Maidens Brush Rd - Wyoming - NSW

 2  1  1



Internal Living	92 m ²
Garage	21 m ²
Covered Patio/Porch	22 m ²
Clothes Area	7 m ²
Total Area	142 m²

This is an indicative floor plan that may vary according to home location within the village/resort. The information, dimensions and specifications on this floor plan are believed to be correct but is not guaranteed and may change without notice. Any illustrations are an artist's impression only and subject to change. Keyton gives no warranty concerning the accuracy of the material or information displayed in this brochure and all such warranties (whether implied or otherwise) are excluded to the extent permitted by law. Prospective purchasers should make their own enquiries.