



## Heathglen

Off Market

\$ 335,000

🏠 2 🚗 1 🏠 1

74 | 2 Glendale Court - Werribee - VIC

📏 89 m<sup>2</sup> Floor Area

Highly appealing unit with updated interiors and a fantastic position within the village

Featuring a wonderfully spacious open-plan layout the home boasts a gorgeous, updated interior, including new paint and floor coverings. The home features a lovely kitchen with up-to-date appliances, a generously sized master bedroom with a built-in robe, a very handy study area air conditioning, and abundant storage space. A private backyard area that adjoins a lovely natural parkland provides an outdoor entertaining area that will be a delightful entertaining space for family and friends alike. There is also a secure car parking space included and ample visitor parking available within the village.

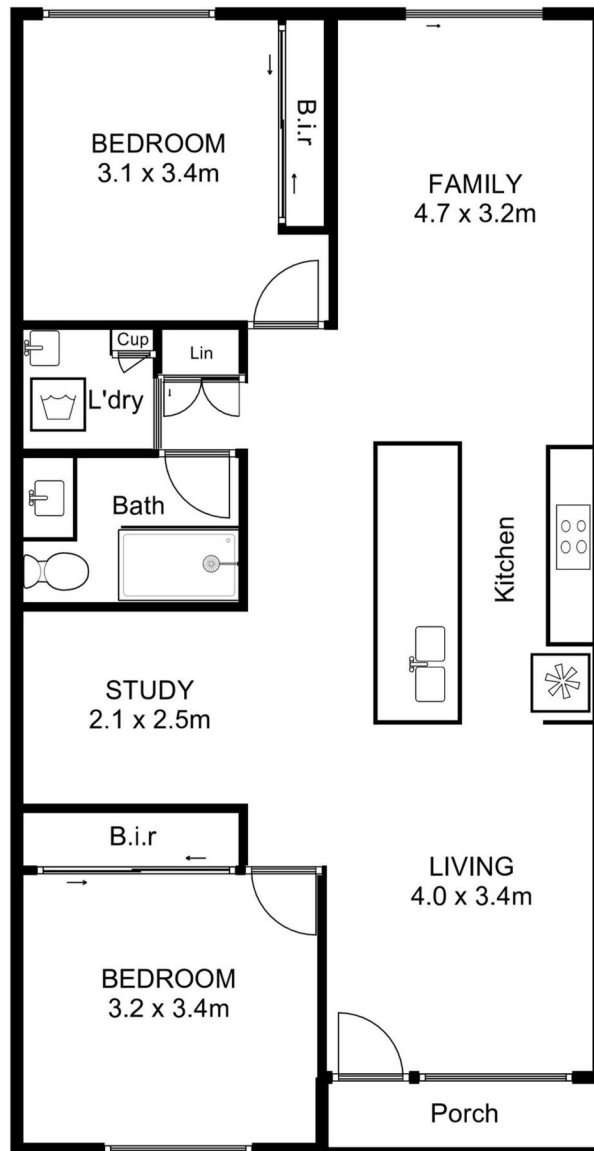


1800 550 550  
keyton.com.au

\*Photographs are for illustrative purposes. Some images may depict items not provided by Keyton within the units such as furniture and other decorative items.

74 | 2 Glendale Court - Werribee - VIC

🛏️ 2 🍽️ 1 🏠 1



This is an indicative floor plan that may vary according to home location within the village/resort. The information, dimensions and specifications on this floor plan are believed to be correct but is not guaranteed and may change without notice. Any illustrations are an artist's impression only and subject to change. Keyton gives no warranty concerning the accuracy of the material or information displayed in this brochure and all such warranties (whether implied or otherwise) are excluded to the extent permitted by law. Prospective purchasers should make their own enquiries.

1800 550 550  
[keyton.com.au](http://keyton.com.au)