




## The Links at Waterford

Off Market

### Contact Sales Manager

The Whiteley | 79 Karoo Road - Rowville - VIC







 2  1.5  1

 0 m<sup>2</sup> Floor Area

### Light-Filled Home with Fresh Updates in a Lovely Setting

Set within the picturesque Links at Waterford Village, this soon-to-be refreshed two-bedroom residence is designed for effortless living. Featuring a sophisticated new look with fresh paint and modern flooring, the home boasts a stylish kitchen with ample bench space, light-filled open-plan living, and two spacious bedrooms with built-in robes—the master with a private ensuite. A European-style laundry, secure single garage with internal access, and tranquil surroundings complete this exceptional offering in a vibrant, community-focused setting.

#### Amenities

-  Dishwasher
-  Fully Fenced
-  High Ceilings
-  Modern Appliances
-  Modern Kitchen
-  Single Lock Up Garage

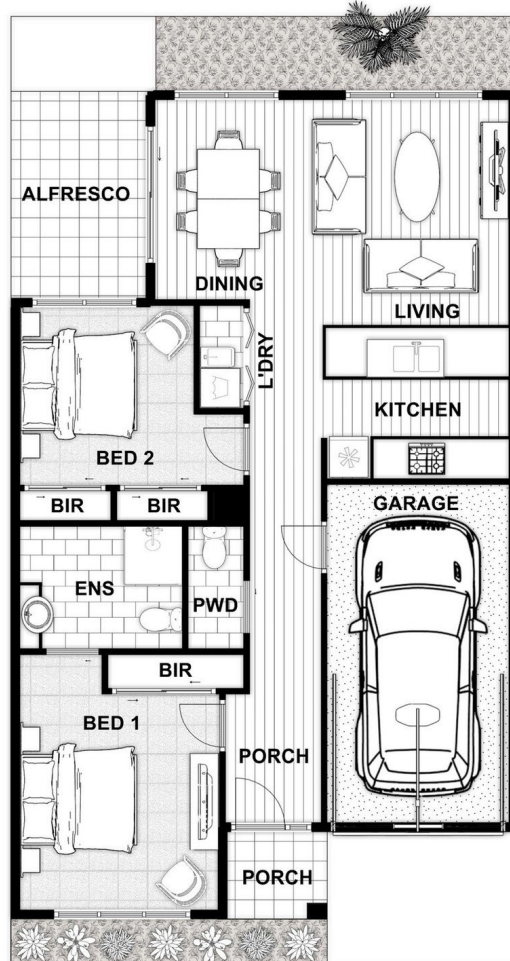


1800 550 550  
[keyton.com.au](https://www.keyton.com.au)

\*Photographs are for illustrative purposes. Some images may depict items not provided by Keyton within the units such as furniture and other decorative items.

The Whiteley | 79 Karoo Road - Rowville - VIC

 2  1.5  1



Area	Metricm <sup>2</sup>
Living:	96.1
Alfresco:	7.5
Porch:	2.7
Garage:	21.0
<b>Total Area:</b>	<b>127.3</b>

This is an indicative floor plan that may vary according to home location within the village/resort. The information, dimensions and specifications on this floor plan are believed to be correct but is not guaranteed and may change without notice. Any illustrations are an artist's impression only and subject to change. Keyton gives no warranty concerning the accuracy of the material or information displayed in this brochure and all such warranties (whether implied or otherwise) are excluded to the extent permitted by law. Prospective purchasers should make their own enquiries.