



Port Phillip Village

Off Market

\$ 170,000

 1  1







SA838 | 1 Stewart Avenue - ALTONA - VIC

 29 m² Floor Area

Renovated Studio with Private Garden Courtyard and Modern Finishes

Nestled in the serene Port Phillip Village, this inviting ground-floor serviced studio offers a harmonious blend of comfort & convenience. The heart of the home is an open-plan living area, seamlessly connecting to a newly installed kitchenette featuring a sleek stone benchtop. The living space extends outdoors, where residents can relish the tranquillity of a garden courtyard. Comfort is paramount with plush new carpeting and a modern bathroom, ensuring a rejuvenating space. Convenience is further amplified by the inclusion of daily meals, weekly cleaning, and a laundry service, providing a hassle-free lifestyle. This delightful apartment also features a split system air conditioner and a dedicated car parking space, culminating in a perfect balance of independent living and supportive amenities.

Amenities

-  Brand new
-  Close To Facilities
-  Close to parks
-  Close to Shops
-  Close to Transport
-  Disability Access

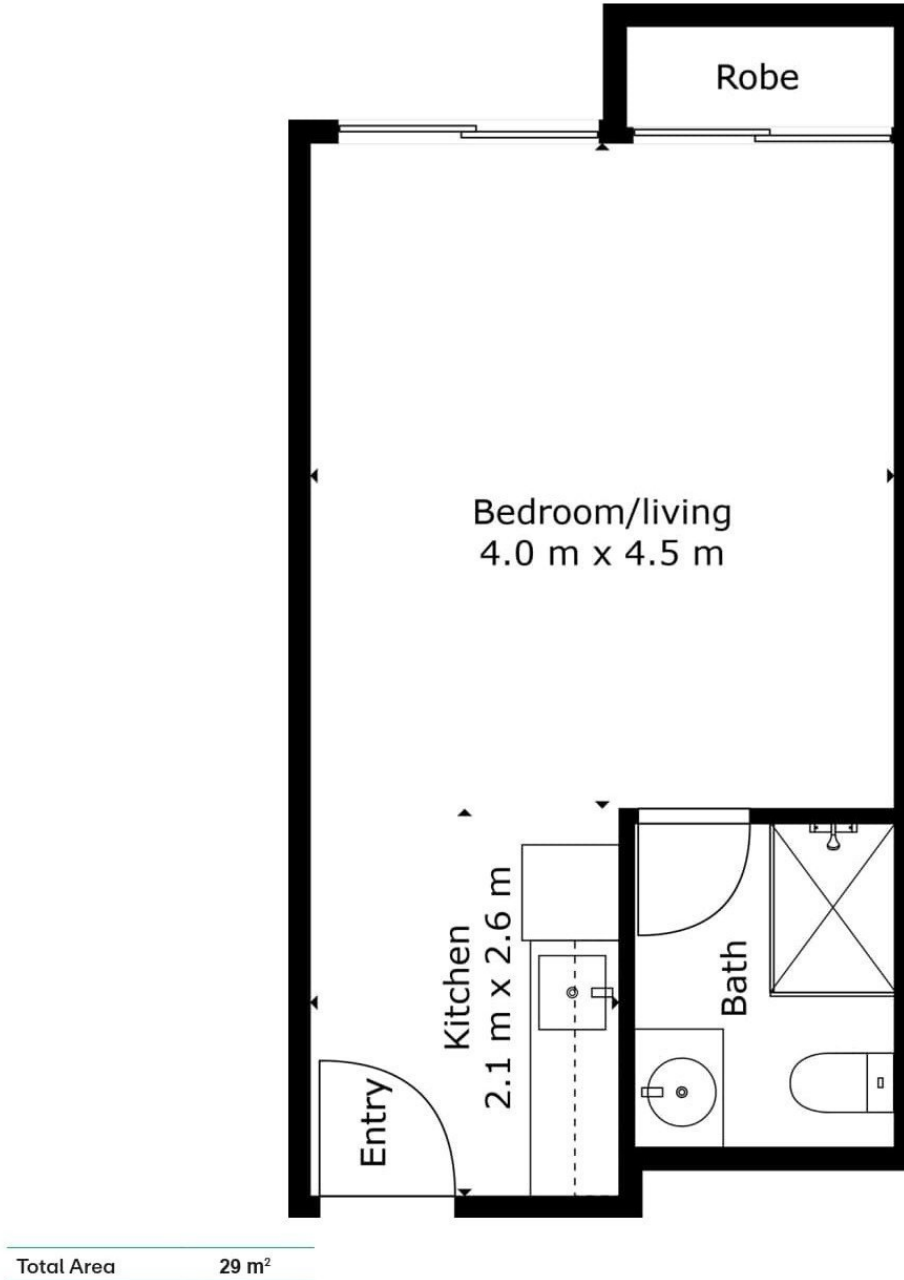


1800 550 550
keyton.com.au

*Photographs are for illustrative purposes. Some images may depict items not provided by Keyton within the units such as furniture and other decorative items.

SA838 | 1 Stewart Avenue - ALTONA - VIC

 1  1



This is an indicative floor plan that may vary according to home location within the village/resort. The information, dimensions and specifications on this floor plan are believed to be correct but is not guaranteed and may change without notice. Any illustrations are an artist's impression only and subject to change. Keyton gives no warranty concerning the accuracy of the material or information displayed in this brochure and all such warranties (whether implied or otherwise) are excluded to the extent permitted by law. Prospective purchasers should make their own enquiries.

1800 550 550
keyton.com.au