



Classic Residences

Off Market

\$ 440,000

🛏 2 🛏 1

2.10 | 3 Brewer Road - Brighton East - VIC

🏠 66 m² Floor Area

Spacious Two-Bedroom Boutique Apartment with Study in Classic Residences Brighton

Centrally positioned and boasting a private second-floor location with lift access, this home offers light-filled interiors and an enviable sense of privacy. Step inside to find a thoughtfully designed floor plan, perfect for a relaxed and comfortable lifestyle. This generously proportioned apartment features two well-appointed bedrooms, providing ample space for you and your guests. Ducted heating and cooling ensure year-round comfort in any season. The study area offers a versatile space, ideal for pursuing hobbies, reading, or setting up a home office.

Amenities

- 🏠 Balcony
- 🔄 Close To Facilities
- 🌳 Close to parks
- 🚗 Close to Transport
- 📡 Ducted cooling
- 📡 Ducted heating

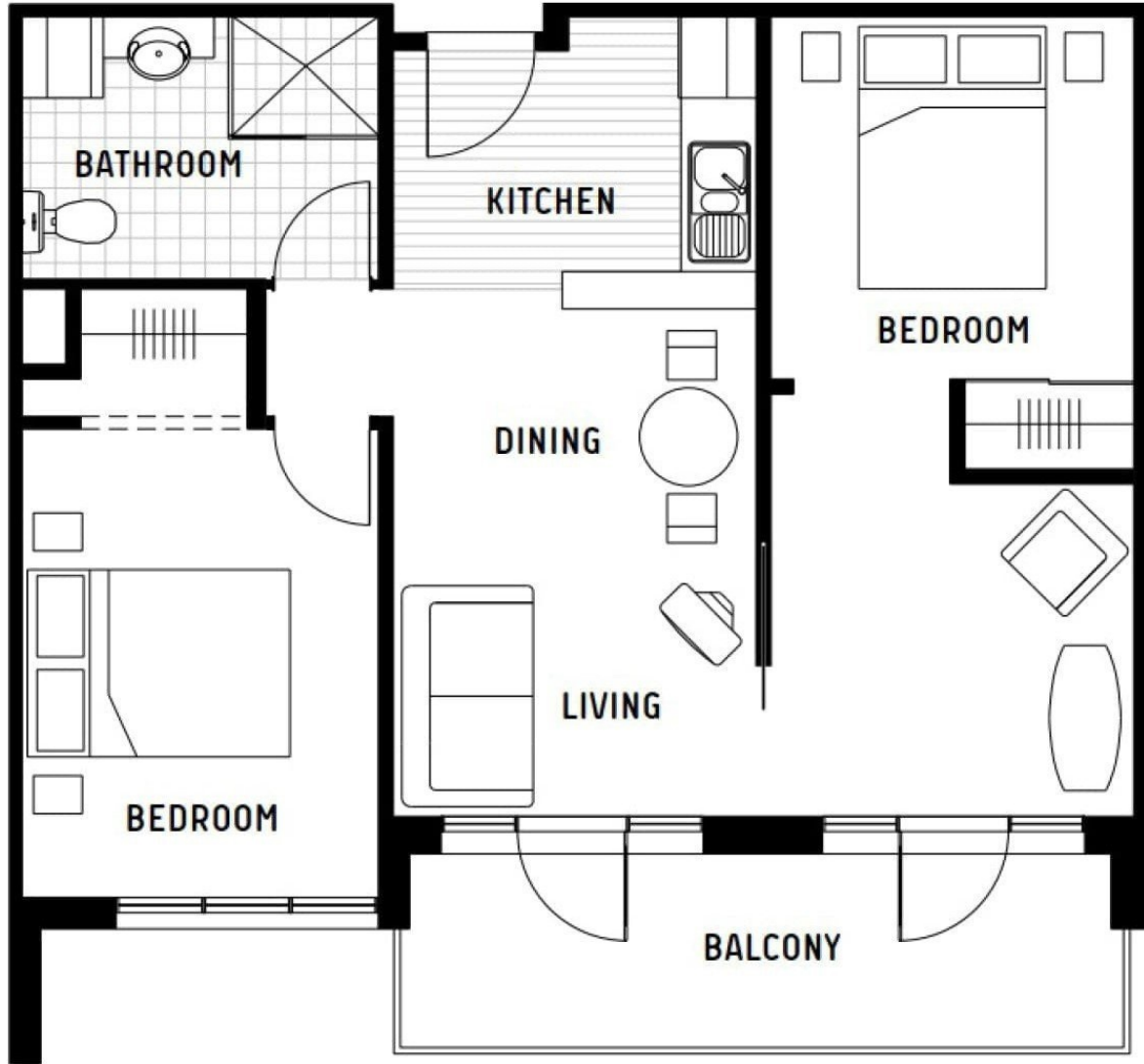


1800 550 550
keyton.com.au

*Photographs are for illustrative purposes. Some images may depict items not provided by Keyton within the units such as furniture and other decorative items.

2.10 | 3 Brewer Road - Brighton East - VIC

 2  1



Total Area	66 m ²
------------	-------------------

This is an indicative floor plan that may vary according to home location within the village/resort. The information, dimensions and specifications on this floor plan are believed to be correct but is not guaranteed and may change without notice. Any illustrations are an artist's impression only and subject to change. Keyton gives no warranty concerning the accuracy of the material or information displayed in this brochure and all such warranties (whether implied or otherwise) are excluded to the extent permitted by law. Prospective purchasers should make their own enquiries.

1800 550 550
keyton.com.au