



## Viewbank Gardens

Off Market

\$ 550,000

🛏️ 2 🚿 1 🚗 1

39 | 26-46 Rutherford Road - Viewbank - VIC

🏠 83 m<sup>2</sup> Floor Area

### Modern Retreat: Renovated Unit Ready To Move In!

Step into a world of refined modern living with this fully upgraded two-bedroom unit. Currently undergoing a comprehensive renovation, this open plan gem is set to redefine your retirement experience. Awaiting your arrival is a brand-new kitchen, bathroom, flooring, appliances, and blinds—everything meticulously selected to offer you the utmost comfort and style. Positioned at the heart of the village, this unit enjoys a central location that's conveniently close to the Community Centre, where you can engage in various social and recreational activities. Admire the lush greenery that graces every window, bringing nature's beauty right into your living space. This unit ensures every detail meets the highest standards of functionality and aesthetics.

#### Amenities

- ✦ Brand new
- 🌳 Close to parks
- 🚗 Close to Transport
- ♿ Disability Access
- 🧼 Dishwasher
- 📞 Emergency Call System

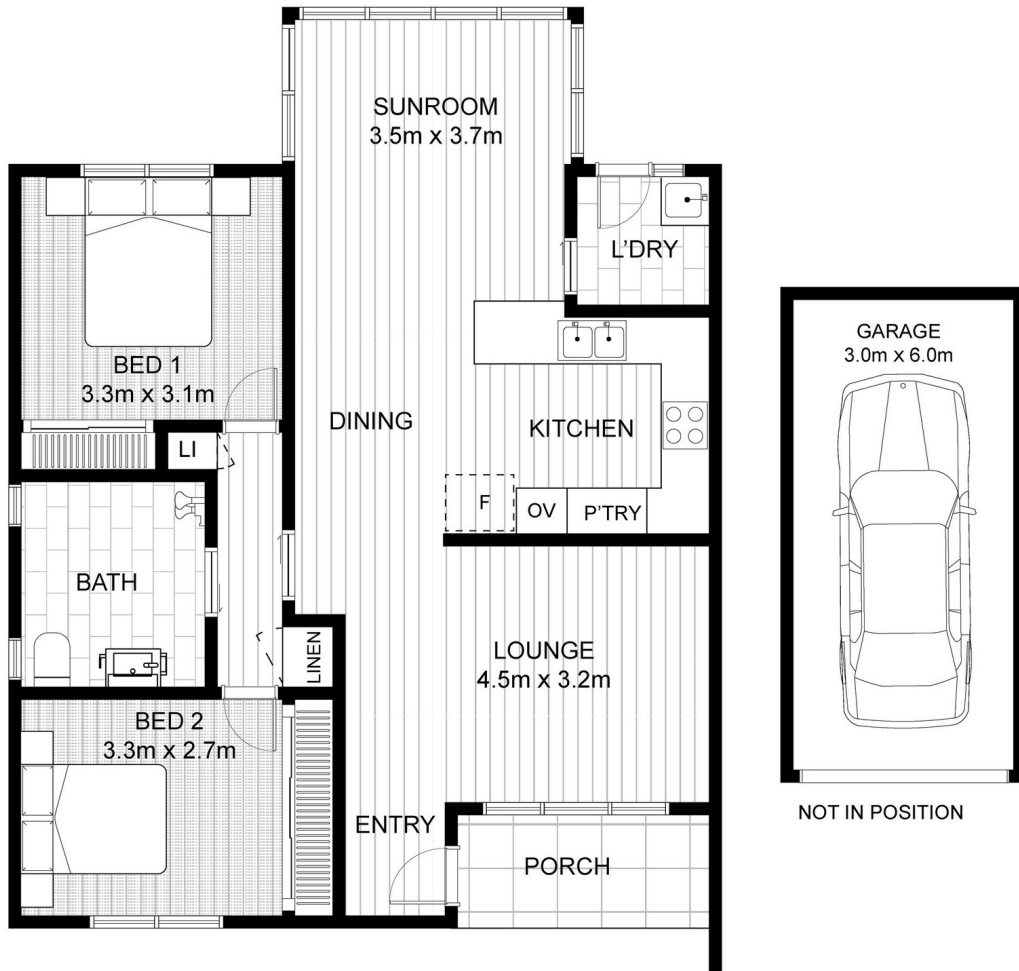


1800 550 550  
keyton.com.au

\*Photographs are for illustrative purposes. Some images may depict items not provided by Keyton within the units such as furniture and other decorative items.

39 | 26-46 Rutherford Road - Viewbank - VIC

 2  1  1



Internal Living	83 m <sup>2</sup>
Garage	16 m <sup>2</sup>
<b>Total Area</b>	<b>99 m<sup>2</sup></b>

This is an indicative floor plan that may vary according to home location within the village/resort. The information, dimensions and specifications on this floor plan are believed to be correct but is not guaranteed and may change without notice. Any illustrations are an artist's impression only and subject to change. Keyton gives no warranty concerning the accuracy of the material or information displayed in this brochure and all such warranties (whether implied or otherwise) are excluded to the extent permitted by law. Prospective purchasers should make their own enquiries.