



Sherwin Rise

For Sale

\$505,000

🏠 2 🚗 2 🚗 1

085/40 Chetwynd Grove - Wollert - VIC

📏 99.98 m² Floor Area

Bright, Open Plan 'Peacock Design Villa

Enjoy easy, low-maintenance living in this thoughtfully designed two-bedroom villa. High ceilings and an open-plan layout create a light, airy feel, while the modern kitchen with Fisher & Paykel appliances anchors the space. The main bedroom features a walk-in robe and ensuite, complemented by a second bedroom with built-in storage. A private courtyard invites relaxed outdoor moments, and a study nook adds everyday flexibility. Complete with epoxy-finished garage and 3kW solar system, this home balances comfort and practicality.

Amenities

- 🛒 Close to Shops
- 🚗 Close to Transport
- 🧼 Dishwasher
- 🍳 Modern Kitchen
- ☀️ Solar Panels



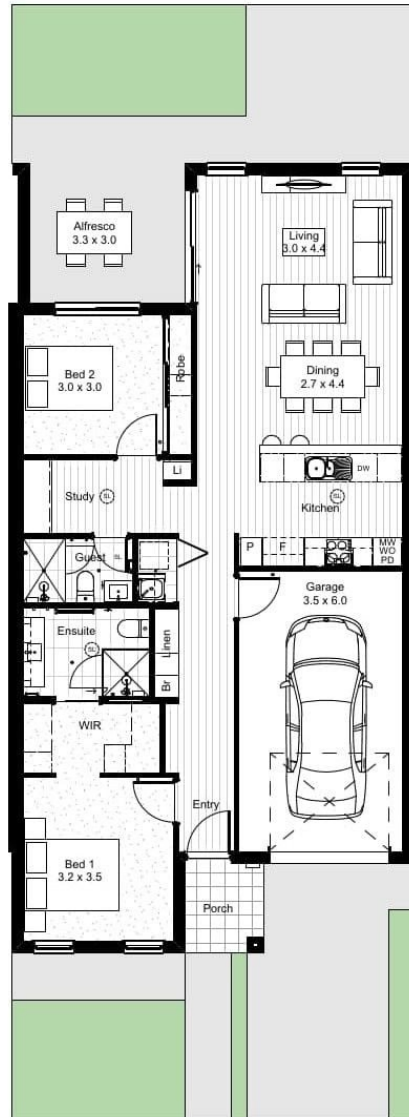
1800 550 550
keyton.com.au

*Photographs are for illustrative purposes. Some images may depict items not provided by Keyton within the units such as furniture and other decorative items.

085/40 Chetwynd Grove - Wollert - VIC

 2  2  1

Peacock



Area	m ²	Squares
Living	99.98	10.8
Garage	22.99	2.4
Alfresco	10.87	1.1
Porch	3.23	0.3
Total	137.07	14.6

This is an indicative floor plan that may vary according to home location within the village/resort. The information, dimensions and specifications on this floor plan are believed to be correct but is not guaranteed and may change without notice. Any illustrations are an artist's impression only and subject to change. Keyton gives no warranty concerning the accuracy of the material or information displayed in this brochure and all such warranties (whether implied or otherwise) are excluded to the extent permitted by law. Prospective purchasers should make their own enquiries.