



## Heathglen

For Sale

\$360,000

🏠 2 🛏 1 🚿 1

037/2 Glendale Court - Werribee - VIC

📏 89.78 m<sup>2</sup> Floor Area

### Modern Comfort with Outdoor Appeal

Designed for comfort and convenience, this two-bedroom home at Heathglen offers easy, low-maintenance living. The open-plan layout brings together the living, dining and kitchen areas, with a modern kitchen featuring quality appliances. Both bedrooms include built-in robes, while the spacious main bathroom and separate toilet add everyday practicality. Outside, the pergola provides a welcoming space to relax or entertain, creating an enjoyable extension of the home.

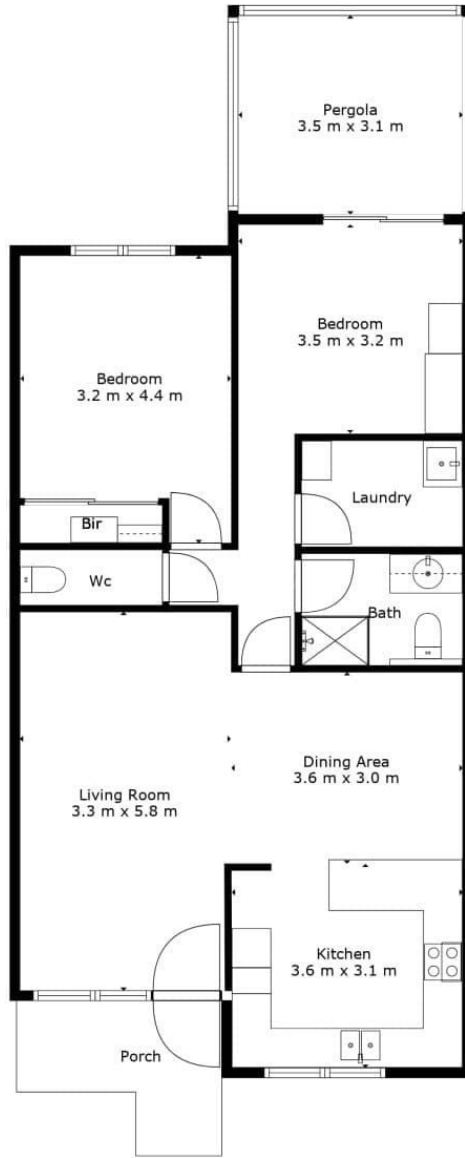


1800 550 550  
keyton.com.au

\*Photographs are for illustrative purposes. Some images may depict items not provided by Keyton within the units such as furniture and other decorative items.

037/2 Glendale Court - Werribee - VIC

 2  1  1



Living	19 m <sup>2</sup>
Dining	10 m <sup>2</sup>
Kitchen	11 m <sup>2</sup>
Porch	3 m <sup>2</sup>
<b>Total Area</b>	<b>83 m<sup>2</sup></b>

This is an indicative floor plan that may vary according to home location within the village/resort. The information, dimensions and specifications on this floor plan are believed to be correct but is not guaranteed and may change without notice. Any illustrations are an artist's impression only and subject to change. Keyton gives no warranty concerning the accuracy of the material or information displayed in this brochure and all such warranties (whether implied or otherwise) are excluded to the extent permitted by law. Prospective purchasers should make their own enquiries.