



Meadowvale

Off Market

\$ 340,000

🛏 2 🚽 1

33 | 12-26 Eagle Drive - Pakenham - VIC

📏 83.61 m² Floor Area

Recently Updated Villa in a Lovely Garden Setting

Explore this recently updated two-bedroom villa in Meadowvale, perfect for those seeking a modern, low-maintenance lifestyle. Featuring light-filled open-plan living areas, a modern kitchen with a dishwasher, and a master bedroom with a built-in wardrobe, this home is designed for comfort. Enjoy the outdoors with full-length verandas at both the front and rear, set against a relaxing garden backdrop. With an updated bathroom, separate toilet, and reverse cycle air conditioning, this villa offers everything you need for easy living.

Amenities

- 🔄 Close To Facilities
- 🧼 Dishwasher
- 📺 Modern Appliances
- 🍳 Modern Kitchen
- 🏠 Open Plan Living
- 🚽 Separate Toilet

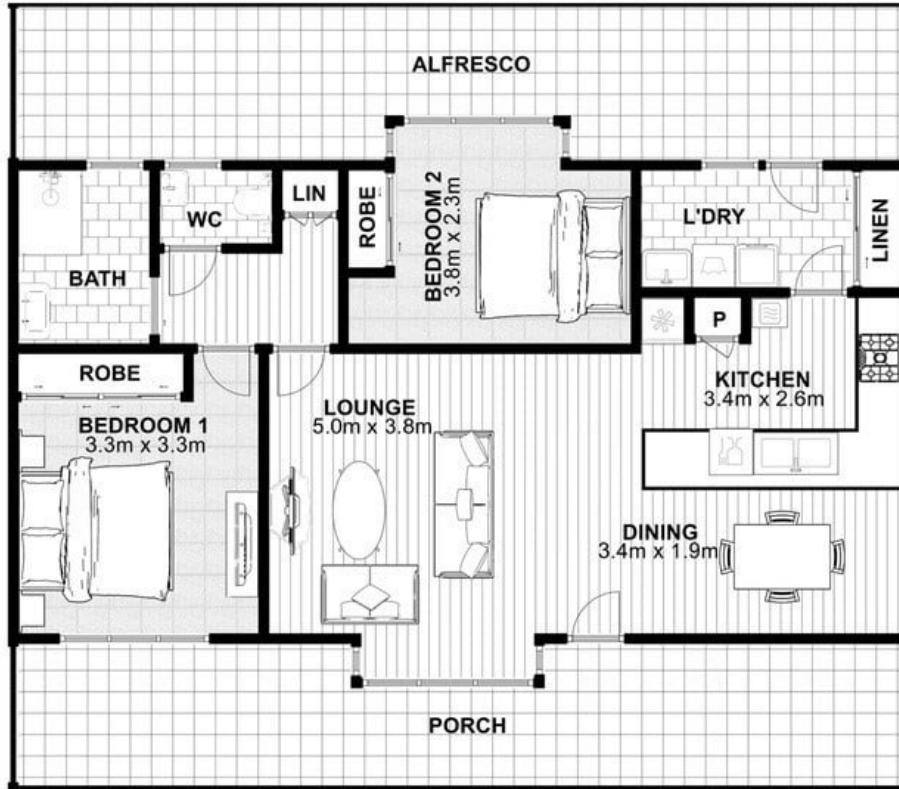


1800 550 550
keyton.com.au

*Photographs are for illustrative purposes. Some images may depict items not provided by Keyton within the units such as furniture and other decorative items.

33 | 12-26 Eagle Drive - Pakenham - VIC

 2  1



Internal Living:	83.8m ²
Alfresco:	25.1m ²
Porch:	23.0m ²
Total Area:	131.9m²

This is an indicative floor plan that may vary according to home location within the village/resort. The information, dimensions and specifications on this floor plan are believed to be correct but is not guaranteed and may change without notice. Any illustrations are an artist's impression only and subject to change. Keyton gives no warranty concerning the accuracy of the material or information displayed in this brochure and all such warranties (whether implied or otherwise) are excluded to the extent permitted by law. Prospective purchasers should make their own enquiries.