



Abervale

Off Market

\$ 490,000

🏠 2 🛏 1 🚗 1

116 | 50 Abervale Way - Grovedale - VIC

📏 72 m² Floor Area

Fully Upgraded Unit with Private Garden and Prime Location

Experience year-round comfort in this fully upgraded, east-facing two-bedroom unit in Abervale Village. Featuring a spacious open-plan layout, new kitchen with stainless steel appliances, and a private rear garden, this home is perfect for modern living. Enjoy the convenience of a brand new bathroom, European laundry, and a single garage. Located near the community centre, Village swimming pool, and bowling green, this home offers the ideal blend of lifestyle and comfort.

Amenities

- 🌬 Air Conditioning
- 🍽 Dishwasher
- 📺 Modern Appliances
- 🍳 Modern Kitchen
- 🏠 Open Plan Living
- 🌿 Outdoor entertaining area

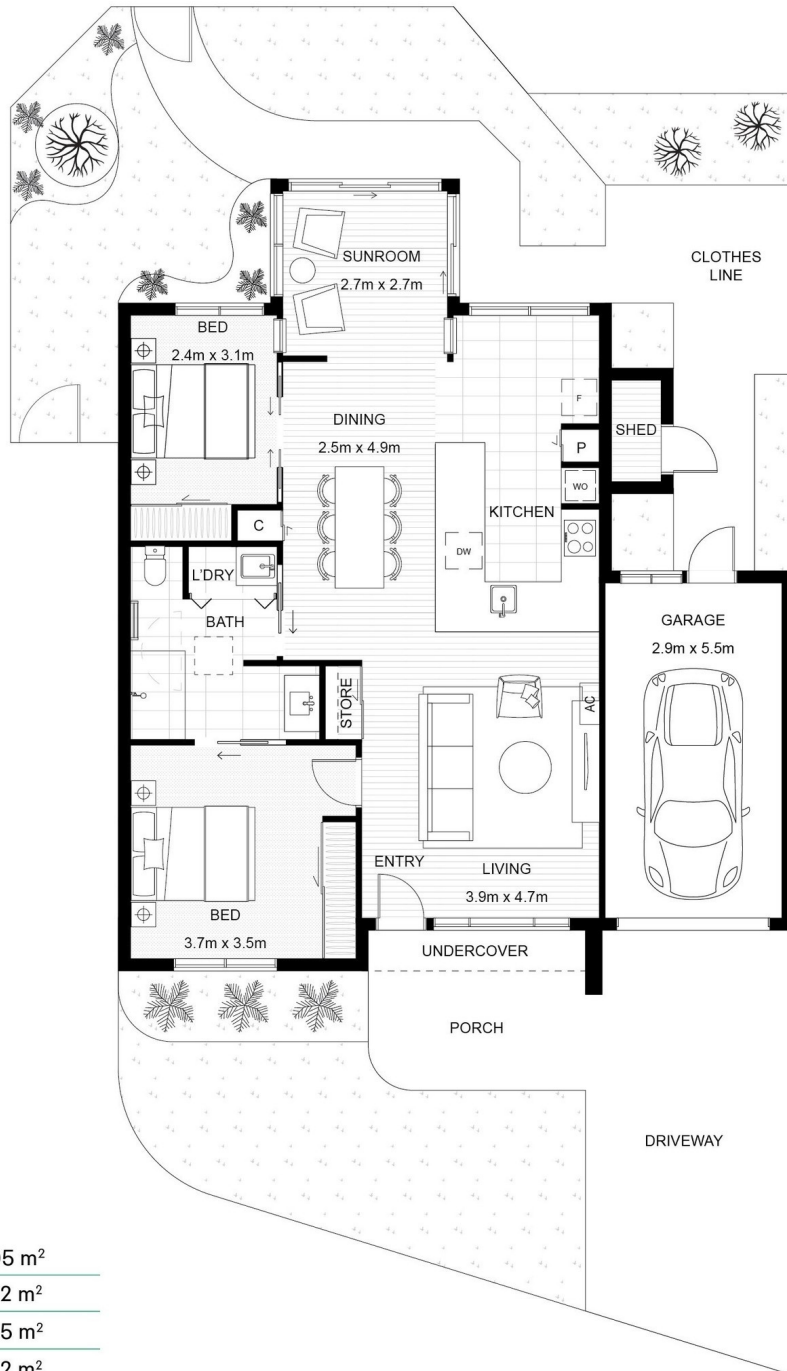


1800 550 550
[keyton.com.au](https://www.keyton.com.au)

*Photographs are for illustrative purposes. Some images may depict items not provided by Keyton within the units such as furniture and other decorative items.

116 | 50 Abervale Way - Grovedale - VIC

 2  1  1



Internal Living	105 m ²
Undercover	2 m ²
Porch	5 m ²
Shed	2 m ²
Total Area	114 m²

This is an indicative floor plan that may vary according to home location within the village/resort. The information, dimensions and specifications on this floor plan are believed to be correct but is not guaranteed and may change without notice. Any illustrations are an artist's impression only and subject to change. Keyton gives no warranty concerning the accuracy of the material or information displayed in this brochure and all such warranties (whether implied or otherwise) are excluded to the extent permitted by law. Prospective purchasers should make their own enquiries.