



Waterford Valley Lakes

Off Market

\$ 1,300,000

🏠 2.5 🛏️ 2 🚗 2

10 | 175 Kelletts Road - Rowville - VIC

📏 184.79 m² Floor Area

Impressive Villa with Gorgeous Lake Views at Waterford Valley Lakes

Discover this charming Two-bedroom plus study villa at Waterford Valley Lakes. Situated in a quiet cul-de-sac, this unique home boasts stunning lake views and rich birdlife. The open-plan living areas are light-filled and spacious, featuring a large kitchen with modern appliances, glass splashback, and stone benchtops. The dining area opens to a covered alfresco space, perfect for entertaining with views of the lake and golf course. The master bedroom includes an ensuite with a bath, while guests can enjoy a separate bathroom. Additional features include an internal laundry, double lock-up garage, ducted heating, and cooling and ceiling fans. This villa will not disappoint – Inspect today!

Amenities

- 🌀 Ceiling Fans
- 🏠 Covered patio
- 🔄 Cul-de-sac
- 🧼 Dishwasher
- 🏠 Double Lock Up Garage With Internal Access
- 🌬️ Ducted cooling

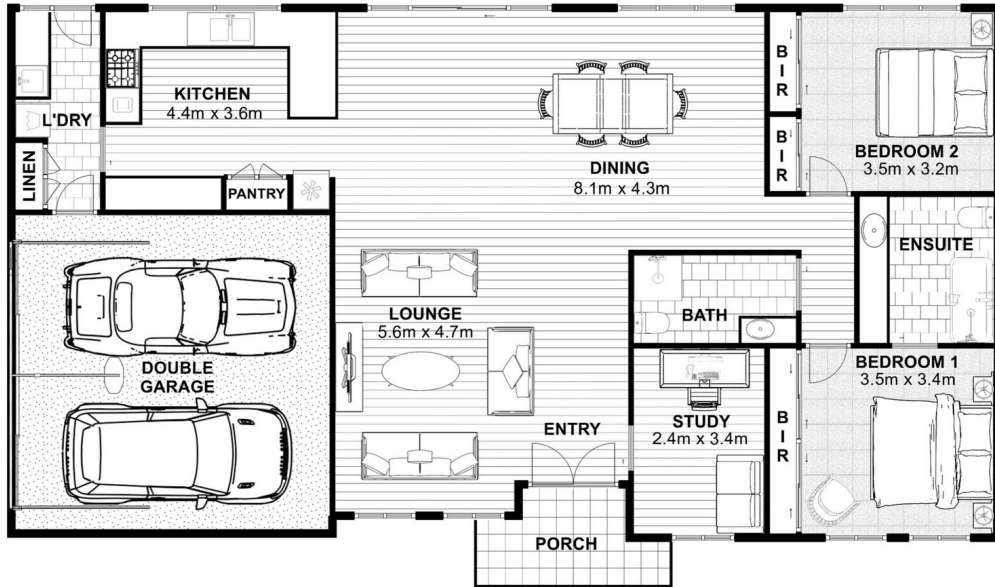


1800 550 550
keyton.com.au

*Photographs are for illustrative purposes. Some images may depict items not provided by Keyton within the units such as furniture and other decorative items.

10 | 175 Kelletts Road - Rowville - VIC

 2.5  2  2



Total Area: **184.79m²**

This is an indicative floor plan that may vary according to home location within the village/resort. The information, dimensions and specifications on this floor plan are believed to be correct but is not guaranteed and may change without notice. Any illustrations are an artist's impression only and subject to change. Keyton gives no warranty concerning the accuracy of the material or information displayed in this brochure and all such warranties (whether implied or otherwise) are excluded to the extent permitted by law. Prospective purchasers should make their own enquiries.