



Nelsons Grove

Off Market

Contact Sales Manager

19 | 2 Newport Street - Pemulwuy - NSW

🛏 3 🚿 2 🏠 1

📏 120 m² Floor Area

Light-Filled Apartment with Stylish Updates and North-Facing Living

This refreshed three-bedroom, two-bathroom apartment at Nelsons Grove is a rare find. With its light-filled, north-facing living area and well-designed layout, you'll enjoy comfort and style in every corner. The modern kitchen boasts Caesarstone benchtops, while the spacious master suite offers direct access to a private balcony. Freshly painted and updated with new flooring, this apartment is move-in ready. Secure parking and a storage locker complete the package. Don't miss out—schedule a viewing today!

Amenities

- 🌬 Air Conditioning
- 🌳 Close to parks
- 🛍 Close to Shops
- 🚊 Close to Transport
- 📞 Emergency Call System
- 🏠 Floorings - tiles

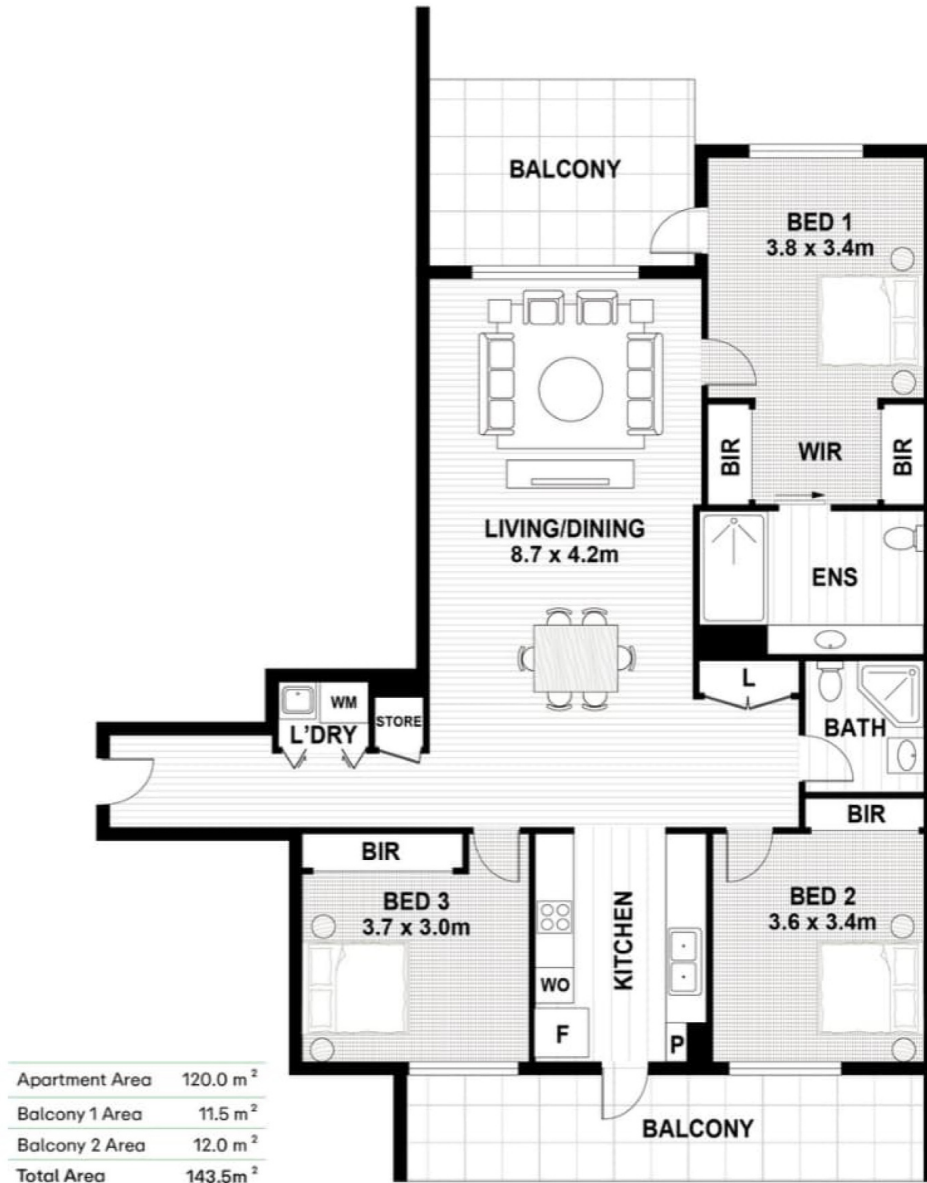


1800 550 550
keyton.com.au

*Photographs are for illustrative purposes. Some images may depict items not provided by Keyton within the units such as furniture and other decorative items. **If the contract option chosen by you requires to do so, you will have to pay a departure fee when you leave this village and/or you will have to pay a departure fee when you leave this village, which will impact on the capital gains received when leaving the village, and/or you will have to share any capital gains received with the operator of this village.

19 | 2 Newport Street - Pemulwuy - NSW

3 2 1



This is an indicative floor plan that may vary according to home location within the village/resort. The information, dimensions and specifications on this floor plan are believed to be correct but is not guaranteed and may change without notice. Any illustrations are an artist's impression only and subject to change. Keyton gives no warranty concerning the accuracy of the material or information displayed in this brochure and all such warranties (whether implied or otherwise) are excluded to the extent permitted by law. Prospective purchasers should make their own enquiries.