

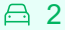




The Grove Ngunnawal

Under Offer

\$1,175,000

 3  2  2






167/1 Monty Place - Ngunnawal - ACT

 124.7 m² Floor Area

Brand-New Villa Living

Enjoy a fresh start in this brand-new villa at The Grove Ngunnawal, designed for comfort and ease. High ceilings and open-plan living create a light, airy feel, while the stylish kitchen with stone benchtops and stainless-steel appliances anchors the home. Three bedrooms offer flexibility, with a walk-in wardrobe and ensuite to the main. A double garage with internal access, separate laundry, and energy-efficient features complete the picture—just a short stroll from the homestead amenities.

Amenities

-  Ceiling Fans
-  Close to Shops
-  Close to Transport
- Disabled Access
-  Dishwasher
-  Double Lock Up Garage



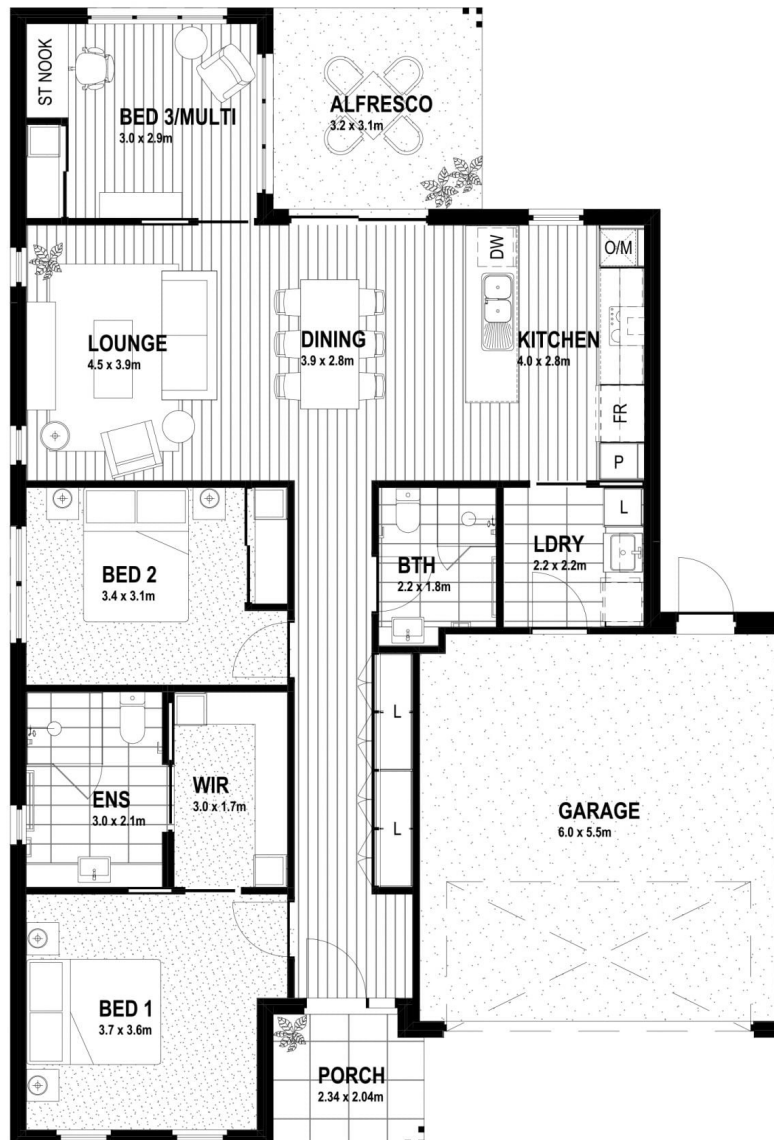
1800 550 550
[keyton.com.au](https://www.keyton.com.au)

*Photographs are for illustrative purposes. Some images may depict items not provided by Keyton within the units such as furniture and other decorative items.

167/1 Monty Place - Ngunnawal - ACT

 3  2  2

Wattle A



INTERNAL LIVING	124.7
GARAGE	36.0
ALFRESCO	10.1
PORCH	4.6
TOTAL	175.4 m²

This is an indicative floor plan that may vary according to home location within the village/resort. The information, dimensions and specifications on this floor plan are believed to be correct but is not guaranteed and may change without notice. Any illustrations are an artist's impression only and subject to change. Keyton gives no warranty concerning the accuracy of the material or information displayed in this brochure and all such warranties (whether implied or otherwise) are excluded to the extent permitted by law. Prospective purchasers should make their own enquiries.