



Classic Residences

For Sale

\$865,000

🛏 2 🚿 1

73 Terrace/3 Brewer Road - Brighton East - VIC

📏 87.47 m² Floor Area

North-Facing Open Plan Living

Enjoy light-filled living in this beautifully refurbished north-facing apartment at Classic Residences. The open-plan design flows seamlessly to a sunny private terrace, perfect for relaxing outdoors or tending to potted plants. Inside, stone kitchen benchtops, modern appliances, two generous bedrooms with built-in robes, and a spacious bathroom with walk-in shower create a stylish and comfortable home.

Complete with reverse cycle heating and cooling plus a separate laundry, this move-in ready residence offers easy modern living in a welcoming community.

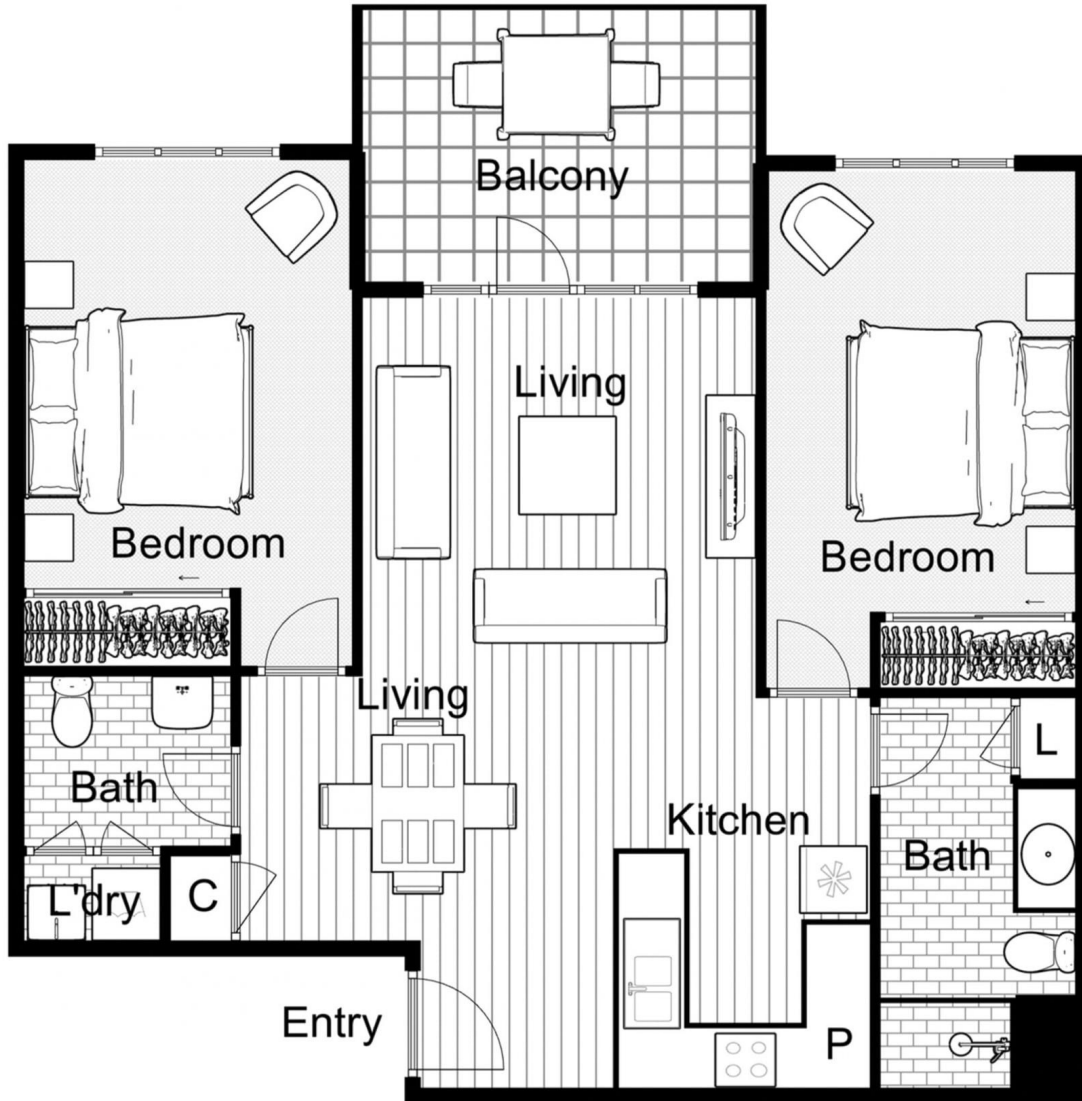


1800 550 550
keyton.com.au

*Photographs are for illustrative purposes. Some images may depict items not provided by Keyton within the units such as furniture and other decorative items.

73 Terrace/3 Brewer Road - Brighton East - VIC

 2  1



Internal Living	87.5 m ²
Total Area	87.5 m ²

This is an indicative floor plan that may vary according to home location within the village/resort. The information, dimensions and specifications on this floor plan are believed to be correct but is not guaranteed and may change without notice. Any illustrations are an artist's impression only and subject to change. Keyton gives no warranty concerning the accuracy of the material or information displayed in this brochure and all such warranties (whether implied or otherwise) are excluded to the extent permitted by law. Prospective purchasers should make their own enquiries.