



Elliot Gardens

For Sale

Expressions of Interest

 3.5  2  1



120/18 Montpelier Terrace - Port Elliot - SA

 132 m² Floor Area

Stylish Seaside Entertainer's Villa

Positioned in a desirable seaside setting, this north-facing villa pairs light-filled living with a peaceful garden retreat. Open-plan interiors flow to a pitched pergola, where mature trees and manicured hedges create a private space to unwind or entertain. Fresh paint, new carpet and plantation shutters bring a crisp finish, while the study off the garage offers flexibility for hobbies or projects. Complete with generous storage, split system comfort and a master suite with walk-through robe to ensuite, all close to the community centre.

Amenities

-  Air Conditioning
-  Single Lock Up Garage

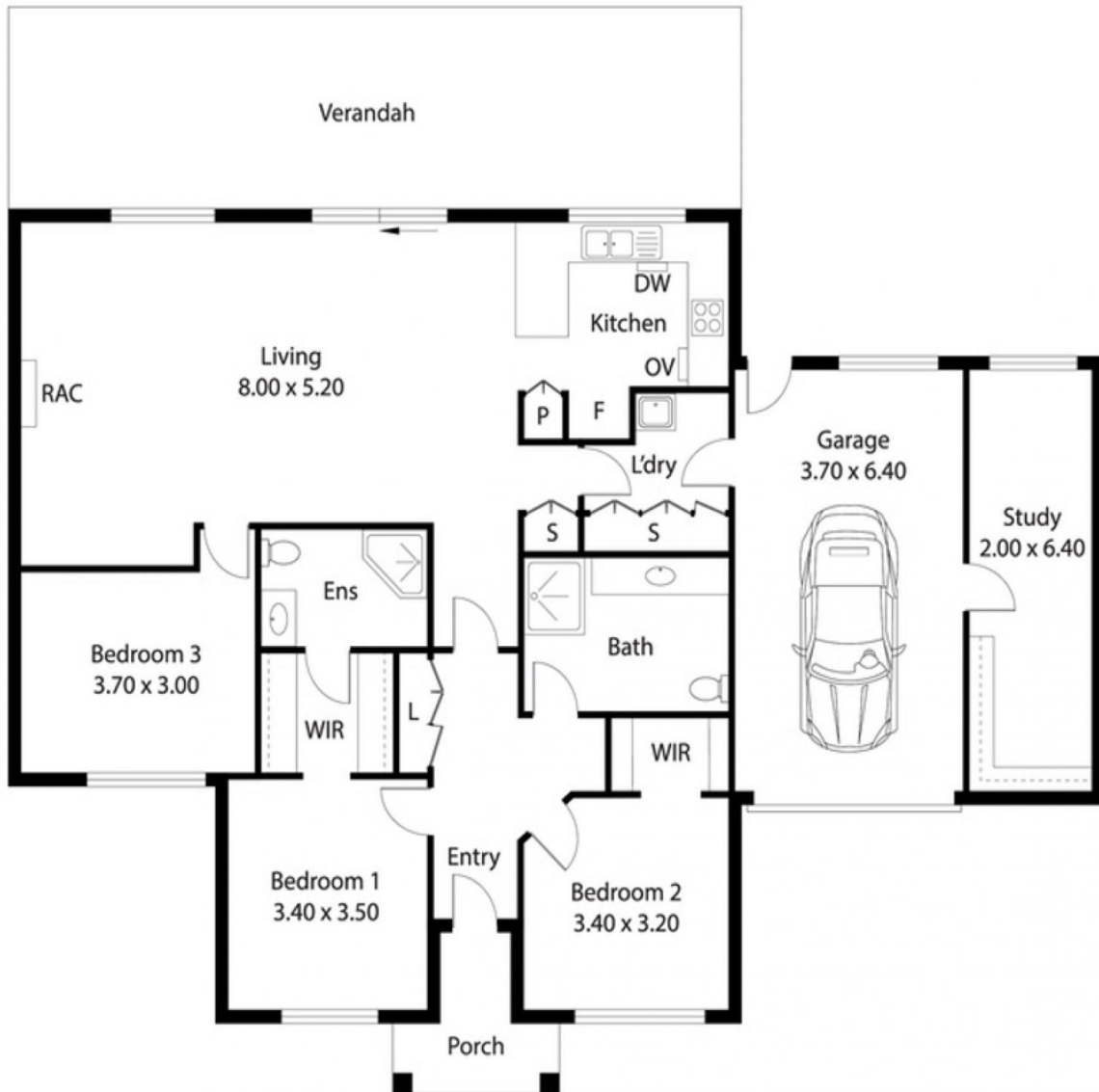


1800 550 550
[keyton.com.au](https://www.keyton.com.au)

*Photographs are for illustrative purposes. Some images may depict items not provided by Keyton within the units such as furniture and other decorative items.

120/18 Montpelier Terrace - Port Elliot - SA

 3.5  2  1



House:	131.5sqm
Verandah:	34.30sqm
Garage:	23.40sqm