



Pittwater Village

For Sale

\$1,050,000

🏠 2 🛏 1.5

052/16-32 Mona Vale Road - Mona Vale - NSW

📏 99 m² Floor Area

Swap Winter for Endless Summer at Pittwater Village

Leave winter behind and embrace the relaxed Northern Beaches lifestyle at Pittwater Village. This beautifully presented two-bedroom home features a modern kitchen, contemporary décor, a spacious bathroom, additional guest toilet and a delightful bay window with a built-in window seat —perfect for enjoying a quiet morning or afternoon. Ideally located in the heart of Mona Vale, you'll have easy access to local shops, cafés, beaches and everything this vibrant coastal community has to offer.

Amenities

- 🏠 Built-ins
- 🌀 Ceiling Fans
- 🍽 Dishwasher
- 🍳 Modern Kitchen
- 📍 North Facing

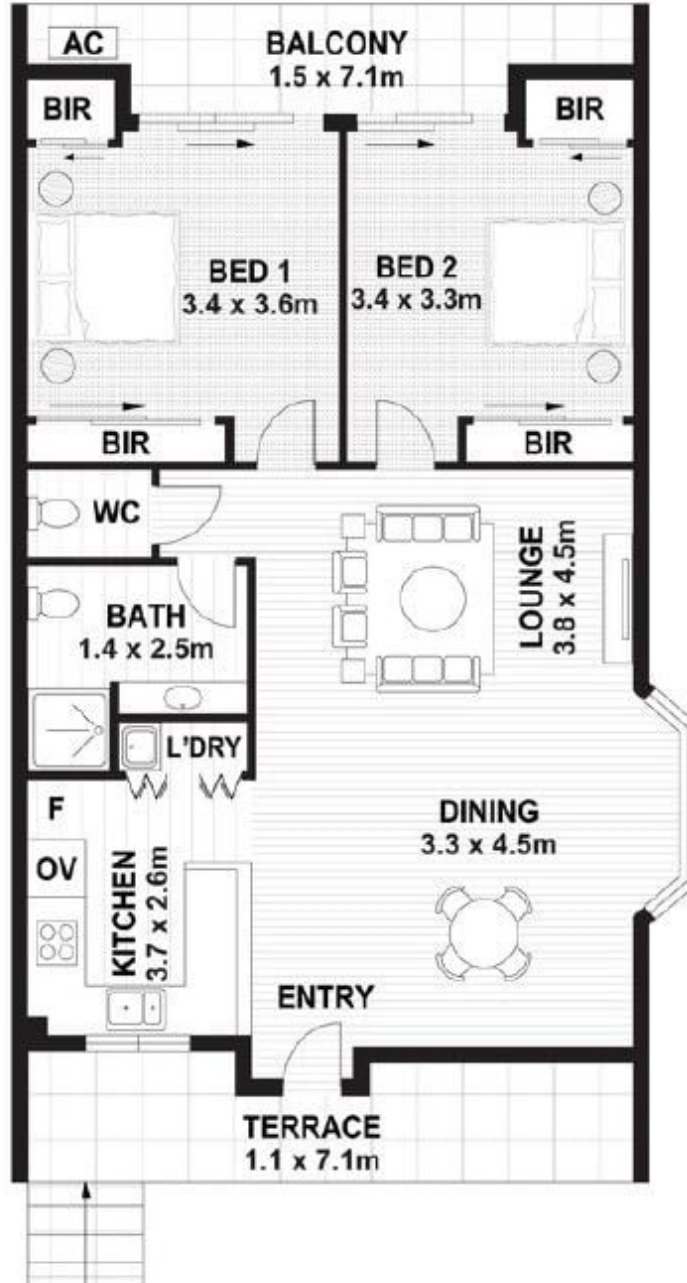


1800 550 550
keyton.com.au

*Photographs are for illustrative purposes. Some images may depict items not provided by Keyton within the units such as furniture and other decorative items. **If the contract option chosen by you requires to do so, you will have to pay a departure fee when you leave this village and/or you will have to pay a departure fee when you leave this village, which will impact on the capital gains received when leaving the village, and/or you will have to share any capital gains received with the operator of this village.

052/16-32 Mona Vale Road - Mona Vale - NSW

 2  1.5



Internal Living	80 m ²
External	20 m ²
Total Area	100 m²



This is an indicative floor plan that may vary according to home location within the village/resort. The information, dimensions and specifications on this floor plan are believed to be correct but is not guaranteed and may change without notice. Any illustrations are an artist's impression only and subject to change. Keyton gives no warranty concerning the accuracy of the material or information displayed in this brochure and all such warranties (whether implied or otherwise) are excluded to the extent permitted by law. Prospective purchasers should make their own enquiries.