



## Highvale

For Sale

\$740,000

🏠 2 🛏 1.5 🚗 1

119/42-60 Capital Avenue - Glen Waverley - VIC

📏 88 m<sup>2</sup> Floor Area

### Private Setting, Newly Renovated

Enjoy the benefits of a newly renovated home in a quiet and private pocket of Highvale. Thoughtfully updated with premium finishes, this two-bedroom residence offers comfortable, low-maintenance living. The spacious lounge features a bay window that enhances the sense of openness, while the undercover outdoor sitting area provides a welcoming space to relax or entertain. Positioned in a peaceful no-through road for added privacy and complete with a large carport, this beautifully refreshed home is ready for its next chapter.

### Amenities

- 🌬 Air Conditioning
- 🌀 Ceiling Fans
- 🍽 Dishwasher
- 🍳 Modern Kitchen

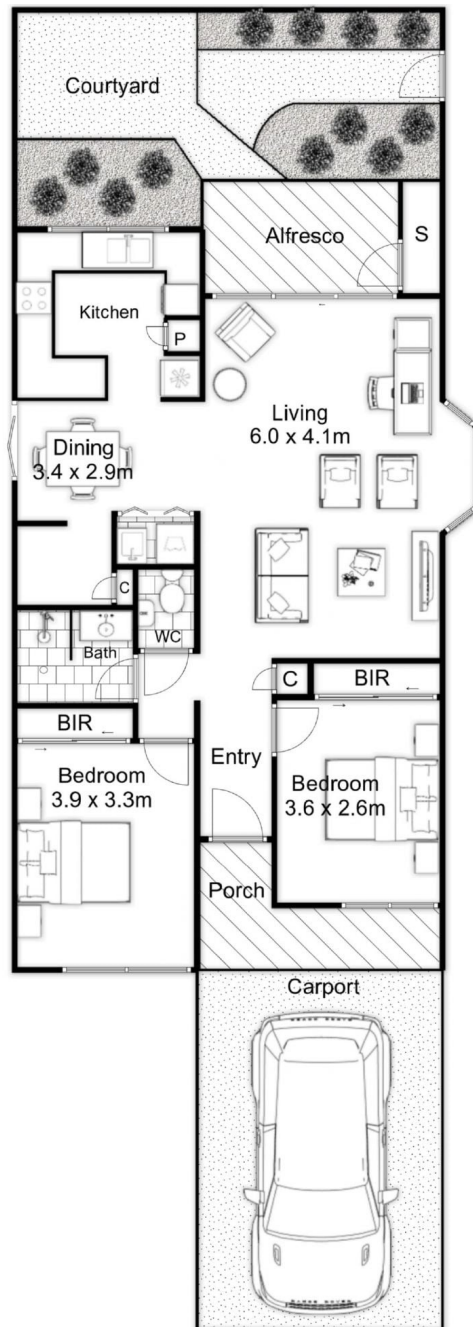


1800 550 550  
keyton.com.au

\*Photographs are for illustrative purposes. Some images may depict items not provided by Keyton within the units such as furniture and other decorative items.

119/42-60 Capital Avenue - Glen Waverley - VIC

 2  1.5  1



Internal Living	78.0m <sup>2</sup>
Alfresco	6.5 m <sup>2</sup>
Porch	5.5 m <sup>2</sup>
<b>Total Area</b>	<b>90.0 m<sup>2</sup></b>

This is an indicative floor plan that may vary according to home location within the village/resort. The information, dimensions and specifications on this floor plan are believed to be correct but is not guaranteed and may change without notice. Any illustrations are an artist's impression only and subject to change. Keyton gives no warranty concerning the accuracy of the material or information displayed in this brochure and all such warranties (whether implied or otherwise) are excluded to the extent permitted by law. Prospective purchasers should make their own enquiries.