



Classic Residences

For Sale

\$670,000

🛏 2 🚿 1

80 Terrace/3 Brewer Road - Brighton East - VIC

📏 74.3 m² Floor Area

Contemporary Living, Generous Spaces

Designed for easy living, this stylish two-bedroom home at Classic Residences combines contemporary interiors with generous indoor and outdoor spaces. The open-plan living and dining area connects seamlessly to a sizeable private deck, creating an ideal setting for relaxing or entertaining. A beautifully appointed kitchen features modern appliances, while the main bedroom includes a walk-in robe for added convenience. Complete with a large bathroom and contemporary décor throughout, this home offers comfort and effortless appeal.

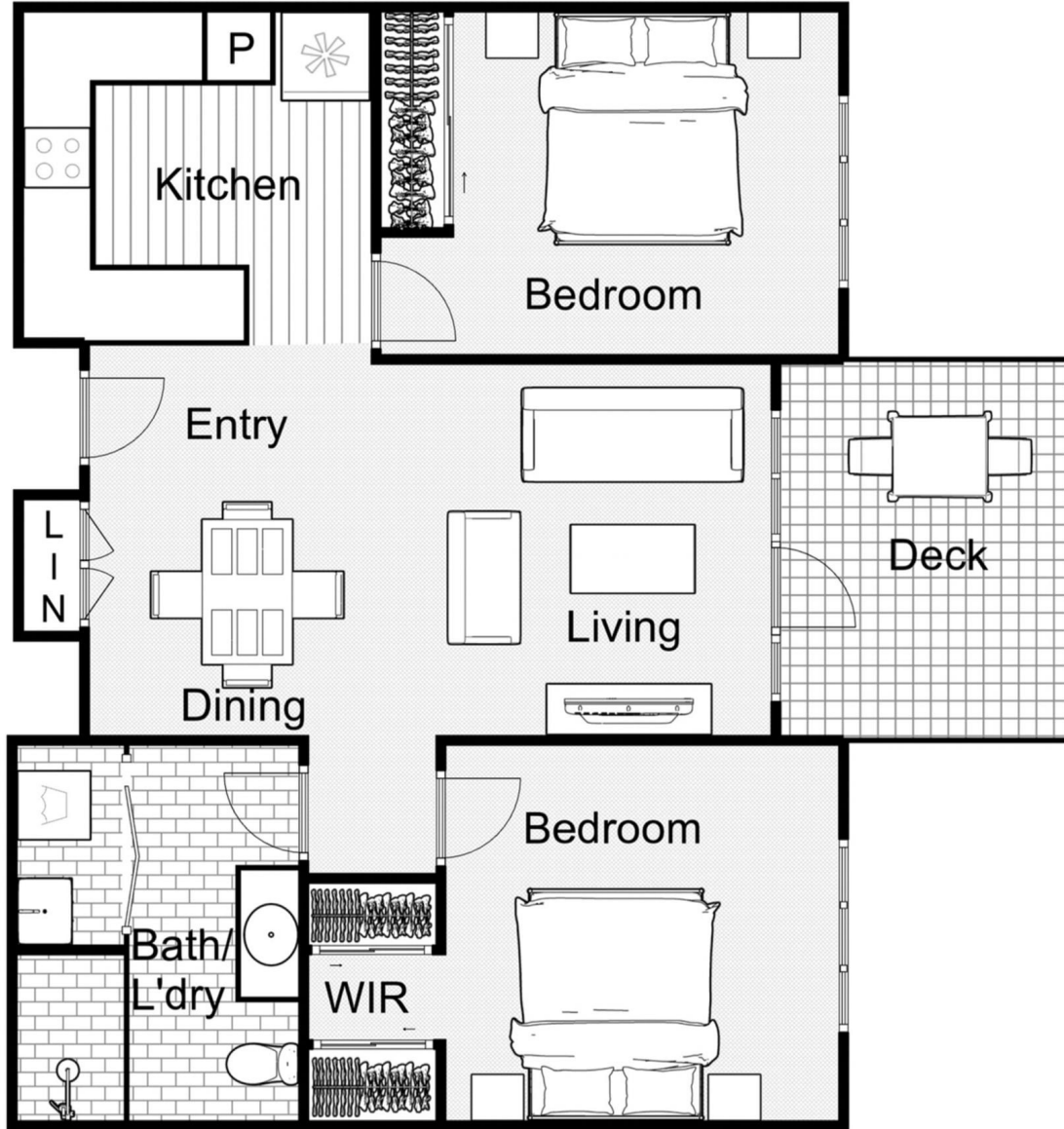


1800 550 550
keyton.com.au

*Photographs are for illustrative purposes. Some images may depict items not provided by Keyton within the units such as furniture and other decorative items.

80 Terrace/3 Brewer Road - Brighton East - VIC

 2  1



Internal Living	74.3 m ²
Total Area	74.3 m ²

This is an indicative floor plan that may vary according to home location within the village/resort. The information, dimensions and specifications on this floor plan are believed to be correct but is not guaranteed and may change without notice. Any illustrations are an artist's impression only and subject to change. Keyton gives no warranty concerning the accuracy of the material or information displayed in this brochure and all such warranties (whether implied or otherwise) are excluded to the extent permitted by law. Prospective purchasers should make their own enquiries.