



Elliot Gardens

For Sale

\$830,000

🏠 3 🛏 2 🚗 1

048/18 Montpelier Terrace - Port Elliot - SA

📏 174 m² Floor Area

Laidback Living by the Sea

Embrace relaxed coastal living in this north-facing villa in Port Elliot. High ceilings and open-plan spaces create an airy feel, while a well-designed kitchen with smart storage connects effortlessly to the dining and living area. Outdoors, a pitched pergola overlooks established gardens and a tranquil water feature. With three bedrooms, a storeroom with safe, master ensuite, internal garage access, air conditioning and solar, this home offers comfort by the coast.

Amenities

- 🌿 Courtyard
- 🧺 Dishwasher
- 📍 North facing

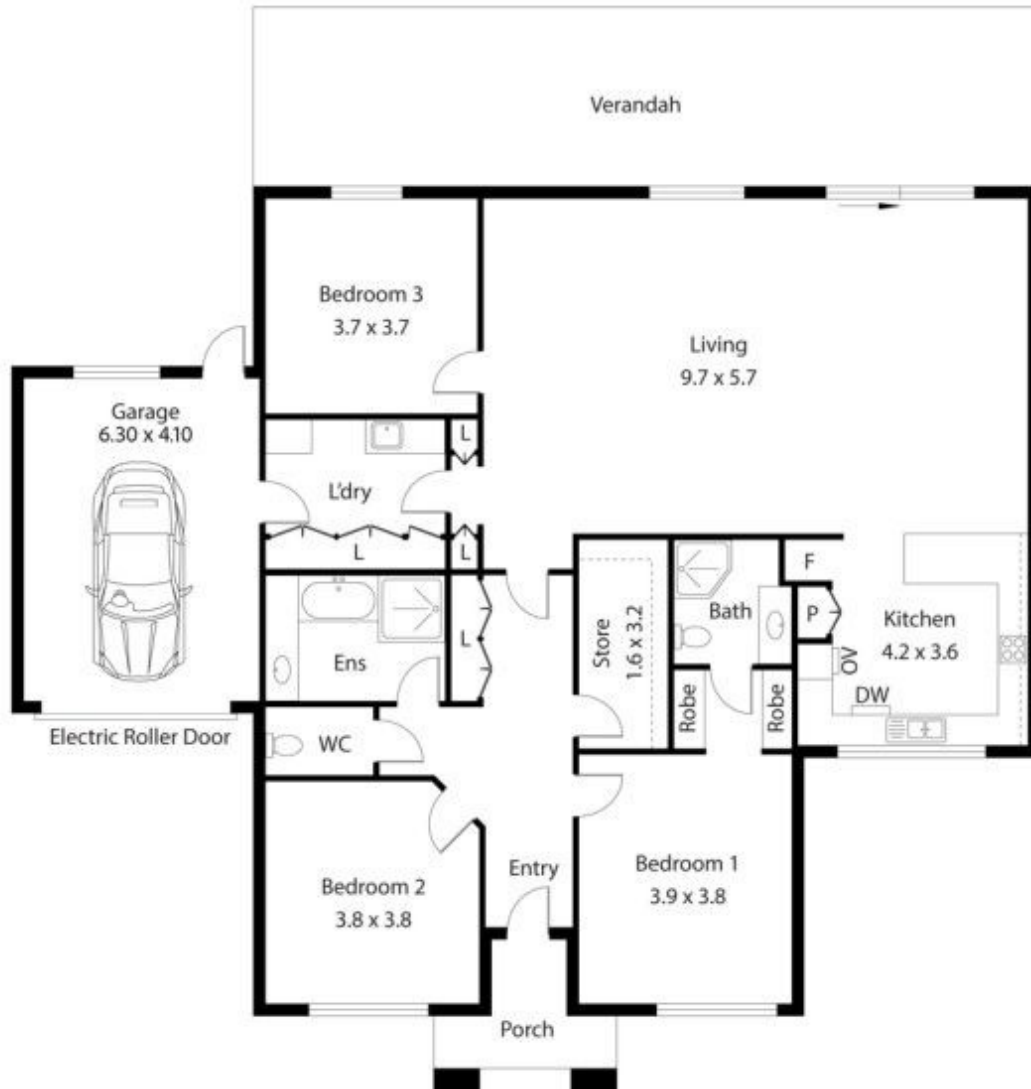



1800 550 550
[keyton.com.au](https://www.keyton.com.au)

*Photographs are for illustrative purposes. Some images may depict items not provided by Keyton within the units such as furniture and other decorative items.

048/18 Montpelier Terrace - Port Elliot - SA

 3  2  1



	House:	173.5sqm
	Verandah:	40.80sqm
	Garage:	25.83sqm

This is an indicative floor plan that may vary according to home location within the village/resort. The information, dimensions and specifications on this floor plan are believed to be correct but is not guaranteed and may change without notice. Any illustrations are an artist's impression only and subject to change. Keyton gives no warranty concerning the accuracy of the material or information displayed in this brochure and all such warranties (whether implied or otherwise) are excluded to the extent permitted by law. Prospective purchasers should make their own enquiries.