



Elliot Gardens

For Sale

Contact Sales Manager

185/18 Montpelier Terrace - Port Elliot - SA





 3.5  2  2

 174 m² Floor Area

Beautiful Gardens, Spacious Living

Enjoy space, comfort, and outdoor living in this beautifully presented Montpelier home at Elliot Gardens. One of the village's largest floor plans, it features three bedrooms plus a spacious study, two bathrooms, and a double garage. The north-facing backyard, established gardens, and two large pergola-covered entertaining areas create a peaceful setting for relaxing or hosting family and friends. Complete with solar panels, plantation shutters, tiled living spaces, and a garden shed, this home offers easy living with room to truly enjoy retirement.

Amenities

-  Air Conditioning
-  Built-ins
-  Dishwasher
-  Solar Panels

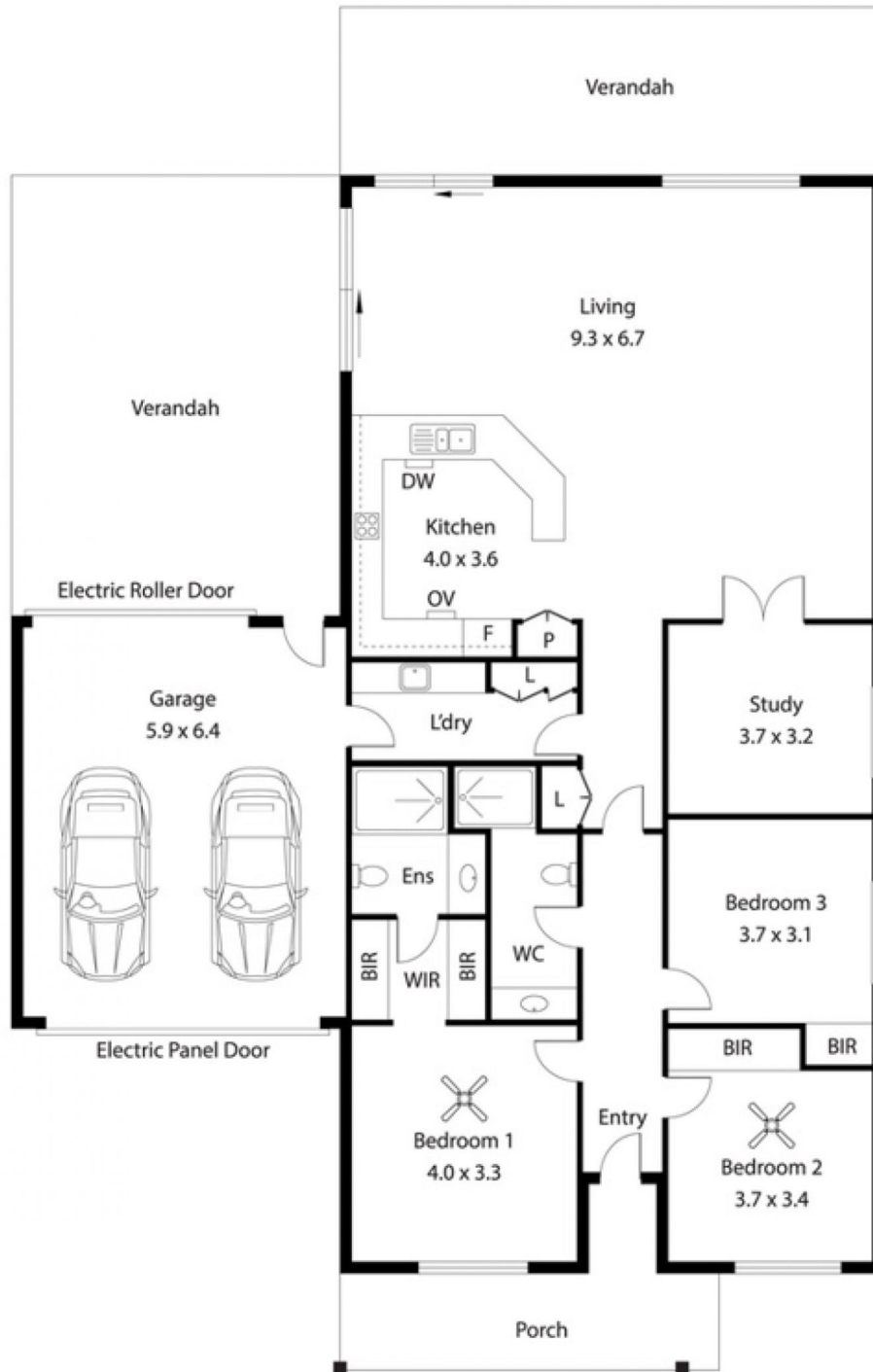


1800 550 550
keyton.com.au

*Photographs are for illustrative purposes. Some images may depict items not provided by Keyton within the units such as furniture and other decorative items.

185/18 Montpelier Terrace - Port Elliot - SA

 3.5  2  2



| | |
|-----------|----------|
| House: | 173.5sqm |
| Verandah: | 70.28sqm |
| Garage: | 37.76sqm |

This is an indicative floor plan that may vary according to home location within the village/resort. The information, dimensions and specifications on this floor plan are believed to be correct but is not guaranteed and may change without notice. Any illustrations are an artist's impression only and subject to change. Keyton gives no warranty concerning the accuracy of the material or information displayed in this brochure and all such warranties (whether implied or otherwise) are excluded to the extent permitted by law. Prospective purchasers should make their own enquiries.

1800 550 550
keyton.com.au