



## Woodlands Park

For Sale

\$760,000

🛏️ 2.5 🍽️ 2 🚗 1

221/72 Kangan Drive - Berwick - VIC

📏 128.1 m<sup>2</sup> Floor Area

### Open-Plan Living with a North-Facing Aspect

Enjoy the warmth of a north-facing aspect and the privacy of a sought-after corner position in this inviting villa. Filled with natural light, the open-plan living and dining area creates a welcoming space to relax or entertain. Two comfortable bedrooms are complemented by a separate study, ideal for working from home, pursuing hobbies, or enjoying a quiet retreat. With a practical layout and bright, spacious interiors, this home offers easy, comfortable living in a desirable setting.

### Amenities

- 🌬️ Air Conditioning
- 🍽️ Dishwasher
- 🔥 Ducted Heating
- 🧭 North facing
- 🚗 Single Lock Up Garage
- 📖 Study



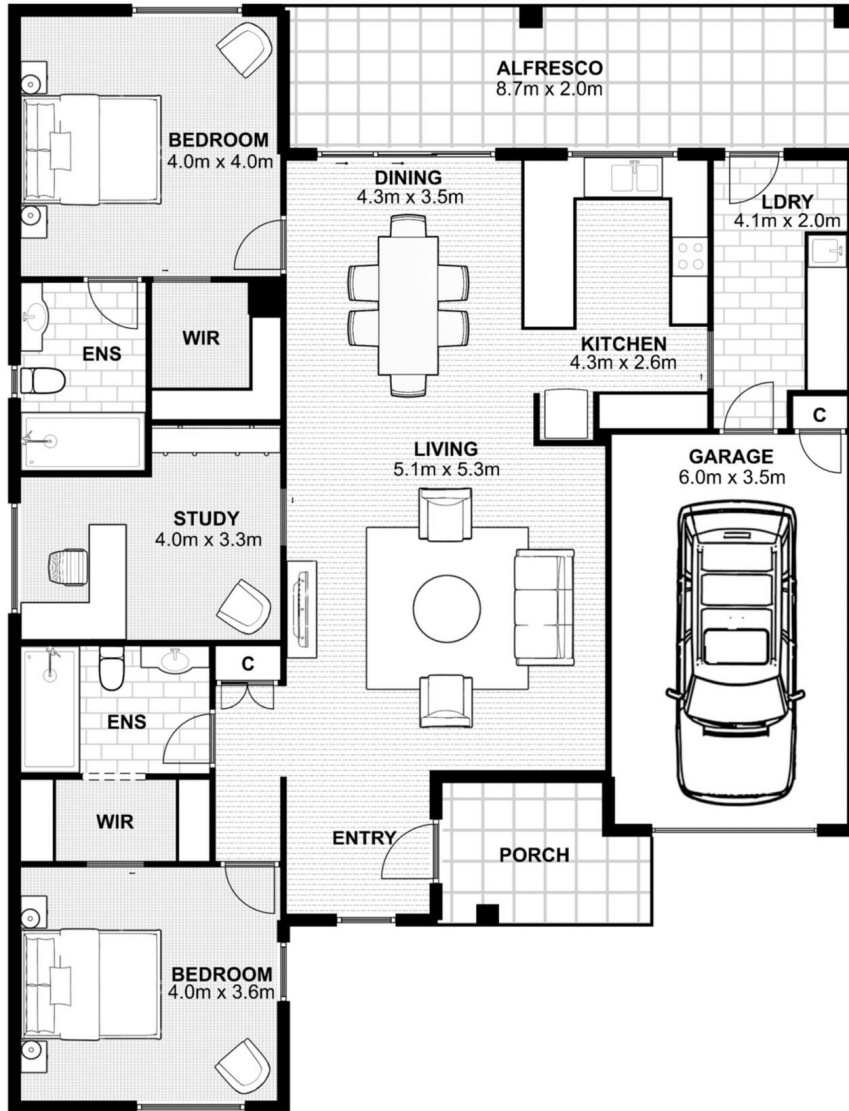
1800 550 550  
keyton.com.au

\*Photographs are for illustrative purposes. Some images may depict items not provided by Keyton within the units such as furniture and other decorative items.

221/72 Kangan Drive - Berwick - VIC

 2.5  2  1

Beech - Mark 2



Internal Living	131 m <sup>2</sup>
Garage	22 m <sup>2</sup>
Alfresco	19 m <sup>2</sup>
Porch	6 m <sup>2</sup>
<b>Total Area</b>	<b>178 m<sup>2</sup></b>

This is an indicative floor plan that may vary according to home location within the village/resort. The information, dimensions and specifications on this floor plan are believed to be correct but is not guaranteed and may change without notice. Any illustrations are an artist's impression only and subject to change. Keyton gives no warranty concerning the accuracy of the material or information displayed in this brochure and all such warranties (whether implied or otherwise) are excluded to the extent permitted by law. Prospective purchasers should make their own enquiries.