



## Abervale

## For Sale

\$460,000

🏠 2.5 🛏️ 1 🚗 1

3 Ivory Court - Grovedale - VIC

📏 89.24 m<sup>2</sup> Floor Area

### Bright Living Spaces and a Pet-Friendly Yard

Enjoy the perfect balance of style, comfort and low-maintenance living in this light-filled north-facing home. The open-plan living and dining area flows seamlessly from a modern kitchen featuring stone benchtops, quality appliances and generous storage. A built-in study nook adds flexibility, while the fully fenced backyard offers a private outdoor space for relaxing, entertaining or spending time with your pet. Complete with a remote lock-up garage, this beautifully presented home is designed for easy living within a welcoming village community.

### Amenities

- 🍳 Modern Kitchen
- 📍 North facing
- 🚗 Single Lock Up Garage

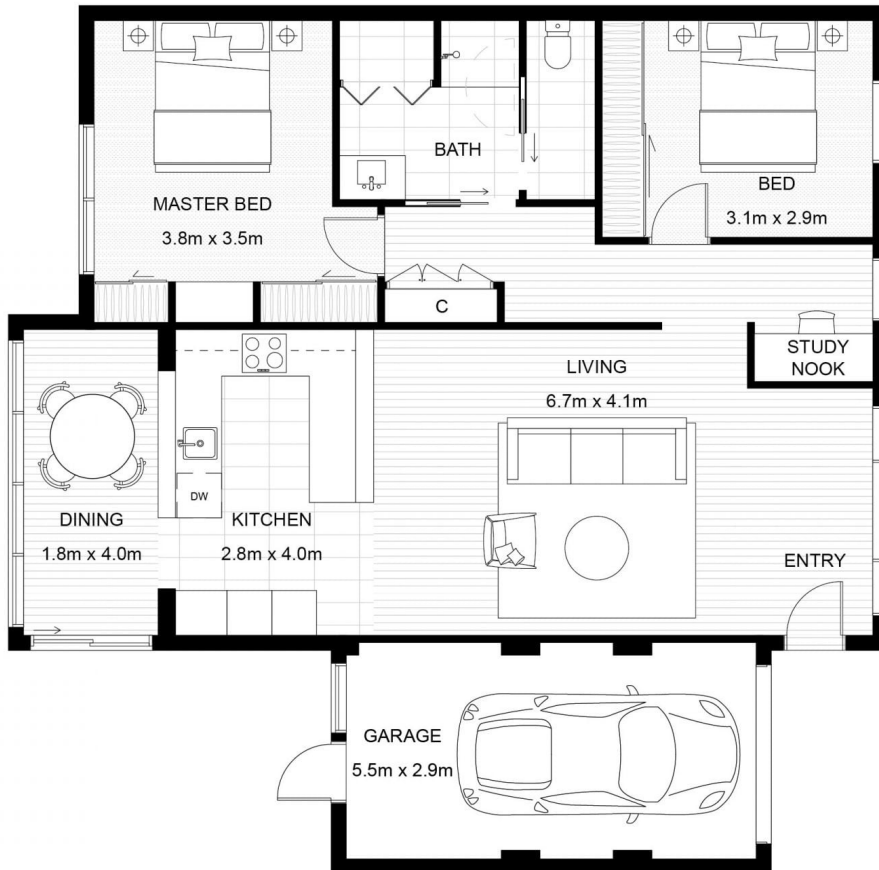


1800 550 550  
[keyton.com.au](https://www.keyton.com.au)

\*Photographs are for illustrative purposes. Some images may depict items not provided by Keyton within the units such as furniture and other decorative items.

3 Ivory Court - Grovedale - VIC

🏠 2.5 🛏 1 🚗 1



Internal Living	104 m <sup>2</sup>
<b>Total Area</b>	<b>104 m<sup>2</sup></b>

This is an indicative floor plan that may vary according to home location within the village/resort. The information, dimensions and specifications on this floor plan are believed to be correct but is not guaranteed and may change without notice. Any illustrations are an artist's impression only and subject to change. Keyton gives no warranty concerning the accuracy of the material or information displayed in this brochure and all such warranties (whether implied or otherwise) are excluded to the extent permitted by law. Prospective purchasers should make their own enquiries.