






Nelsons Grove

For Sale

\$870,000






 2  2  1

116/2 Newport Street - Pemulwuy - NSW

Spacious Living, First Floor Position

Enjoy room to move in this refreshed first-floor apartment at Nelsons Grove. With an oversized living area designed for hosting and an extra-large main bedroom featuring generous robes, the home delivers comfort on a larger scale. A modern kitchen with updated benchtop and dishwasher connects easily to the open-plan layout, while a private balcony adds an outdoor retreat. Complete with reverse cycle air conditioning, ensuite, and car space, this is spacious, easy living.

Amenities

-  Air Conditioning
-  Dishwasher
-  Gym
-  Modern Kitchen
-  Swimming/Lap Pool

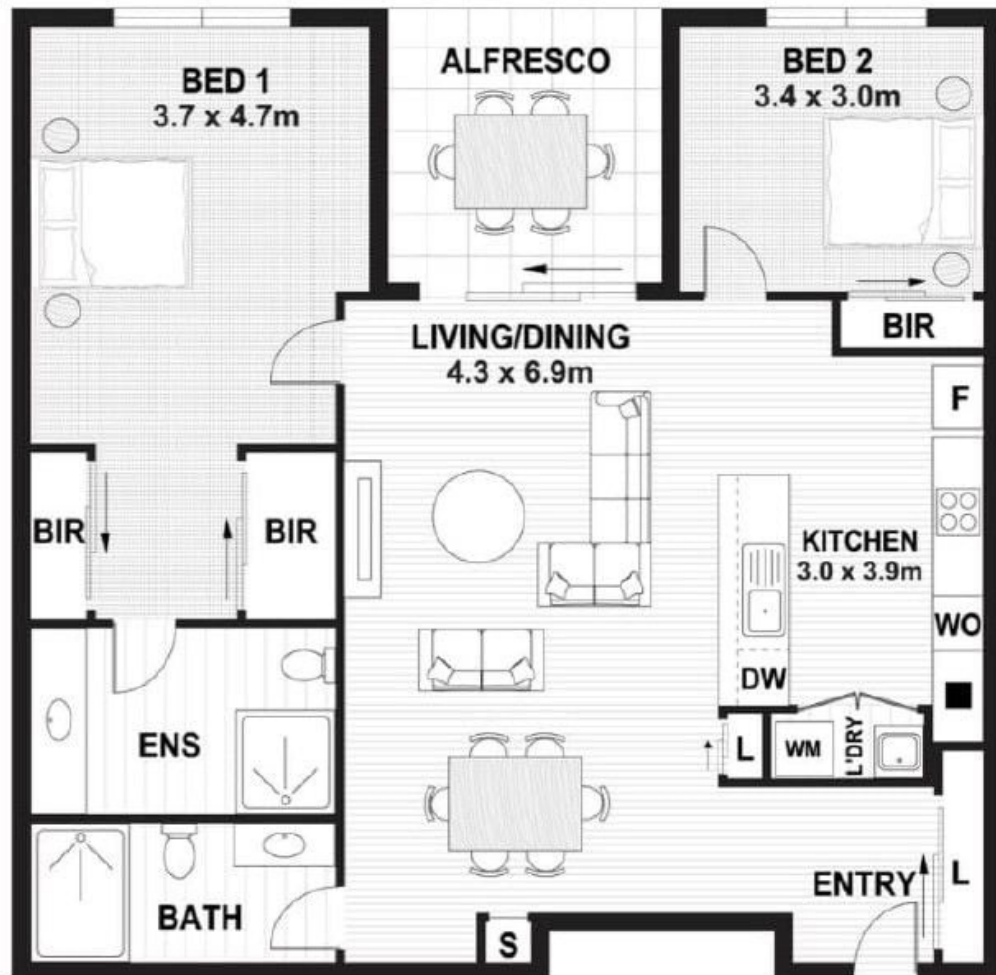


1800 550 550
[keyton.com.au](https://www.keyton.com.au)

*Photographs are for illustrative purposes. Some images may depict items not provided by Keyton within the units such as furniture and other decorative items. **If the contract option chosen by you requires to do so, you will have to pay a departure fee when you leave this village and/or you will have to pay a departure fee when you leave this village, which will impact on the capital gains received when leaving the village, and/or you will have to share any capital gains received with the operator of this village.

116/2 Newport Street - Pemulwuy - NSW

🛏️ 2 🚿 2 🚪 1



Internal Living	100.5 m ²
Alfresco	9.6 m ²
Total Area	110.1 m²

This is an indicative floor plan that may vary according to home location within the village/resort. The information, dimensions and specifications on this floor plan are believed to be correct but is not guaranteed and may change without notice. Any illustrations are an artist's impression only and subject to change. Keyton gives no warranty concerning the accuracy of the material or information displayed in this brochure and all such warranties (whether implied or otherwise) are excluded to the extent permitted by law. Prospective purchasers should make their own enquiries.