






Highvale

For Sale

\$798,000




 2  1  1

72/42-60 Capital Avenue - Glen Waverley - VIC

Garden-Wrapped Corner Home with Space and Privacy

Step through a garden-framed entry into a home that immediately feels open and inviting. A wraparound garden extends the living space outdoors, while a covered patio sets the scene for relaxed entertaining. Inside, the layout offers flexibility with open plan living and a separate lounge, centred around a modern kitchen with stone benchtops. A bay window and skylight draw light deep into the home, while thoughtful updates, generous storage and garage access complete this quietly positioned retreat.

Amenities

-  Air Conditioning
-  Dishwasher
-  Modern Kitchen

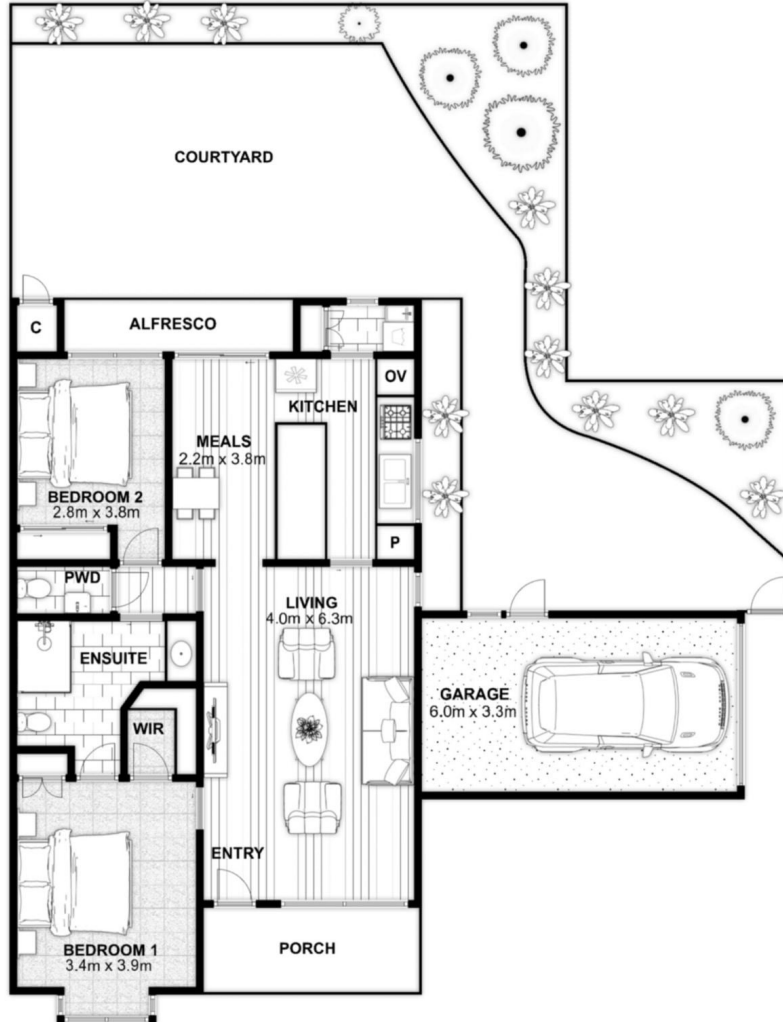


1800 550 550
keyton.com.au

*Photographs are for illustrative purposes. Some images may depict items not provided by Keyton within the units such as furniture and other decorative items.

72/42-60 Capital Avenue - Glen Waverley - VIC

 2  1  1



Internal Living:	86.3 m ²
Garage:	19.8 m ²
Total Area:	106.1 m²

This is an indicative floor plan that may vary according to home location within the village/resort. The information, dimensions and specifications on this floor plan are believed to be correct but is not guaranteed and may change without notice. Any illustrations are an artist's impression only and subject to change. Keyton gives no warranty concerning the accuracy of the material or information displayed in this brochure and all such warranties (whether implied or otherwise) are excluded to the extent permitted by law. Prospective purchasers should make their own enquiries.