






Evelyn Ridge

For Sale

\$895,000





 3  2  1

112/120 Clegg Road - Mount Evelyn - VIC

Space, Style, Light

Enjoy the perfect blend of space, comfort and convenience in this beautifully presented three-bedroom home at Evelyn Ridge. Filled with natural light from its desirable north-facing aspect, the home features a modern kitchen with quality appliances, a spacious main bedroom with ensuite, and built-in robes to all bedrooms. Ducted heating and cooling, plus two split systems, provide year-round comfort. Outside, a large entertaining area and generous backyard create a wonderful space to relax and enjoy the outdoors. Complete with a double garage and close to the Community Centre, this is retirement living at its best.

Amenities

-  Air Conditioning
-  Built-ins
-  Dishwasher
-  Rainwater Tank



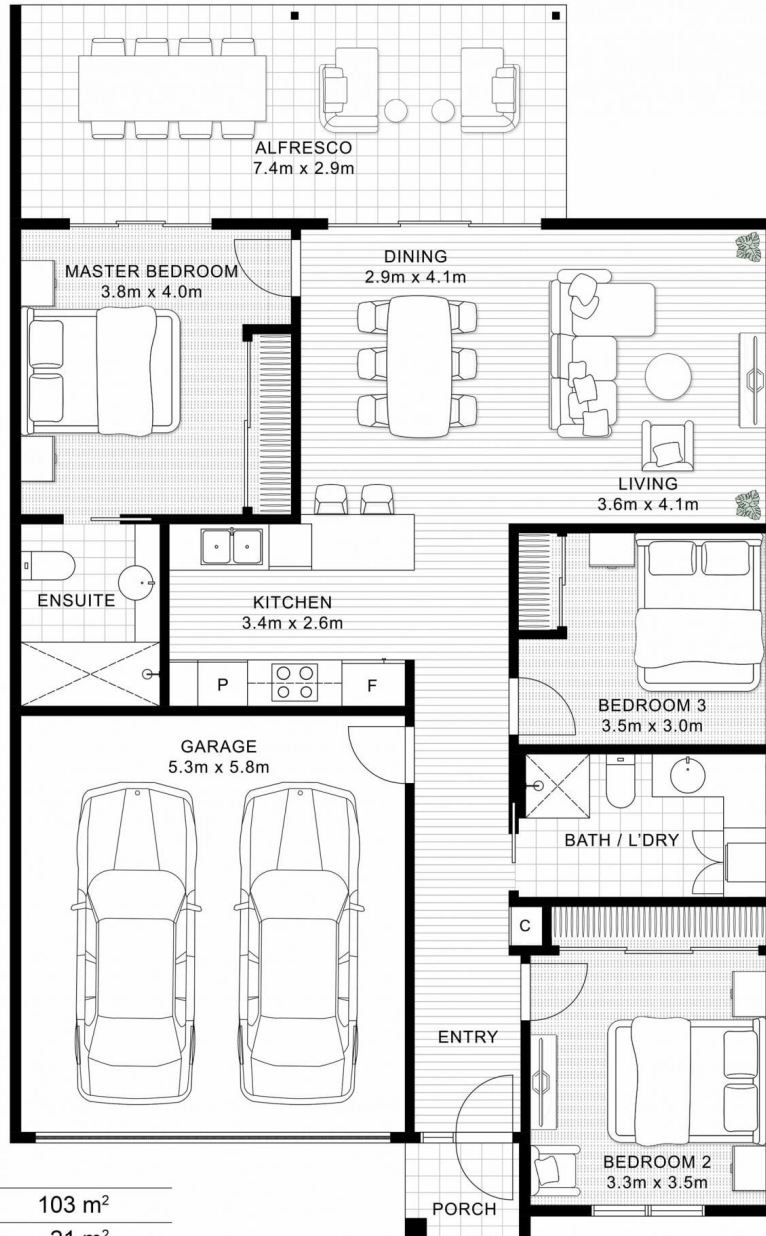
1800 550 550
keyton.com.au

*Photographs are for illustrative purposes. Some images may depict items not provided by Keyton within the units such as furniture and other decorative items.

112/120 Clegg Road - Mount Evelyn - VIC

 3  2  1

Millgrove



| | |
|-------------------|--------------------------|
| Internal Living | 103 m ² |
| Alfresco | 21 m ² |
| Porch | 2 m ² |
| Garage | 31 m ² |
| Total Area | 157 m² |

This is an indicative floor plan that may vary according to home location within the village/resort. The information, dimensions and specifications on this floor plan are believed to be correct but is not guaranteed and may change without notice. Any illustrations are an artist's impression only and subject to change. Keyton gives no warranty concerning the accuracy of the material or information displayed in this brochure and all such warranties (whether implied or otherwise) are excluded to the extent permitted by law. Prospective purchasers should make their own enquiries.